

FROM THE OFFICE OF

CHARLES O. GEORGI COMPANY

2215 West County Road B

Saint Paul, Minnesota 55113

REGISTERED CIVIL ENGINEER AND LAND SURVEYOR



Certificate of Survey

I Hereby Certify that this plat shows a survey made by me of the property described on this plat, and that the corners are correctly placed as shown, and that all locations have been correctly shown.

9/11/74 Added house location

Surveyed For Mark Rammer

Date May 1974

Scale 1" = 40'

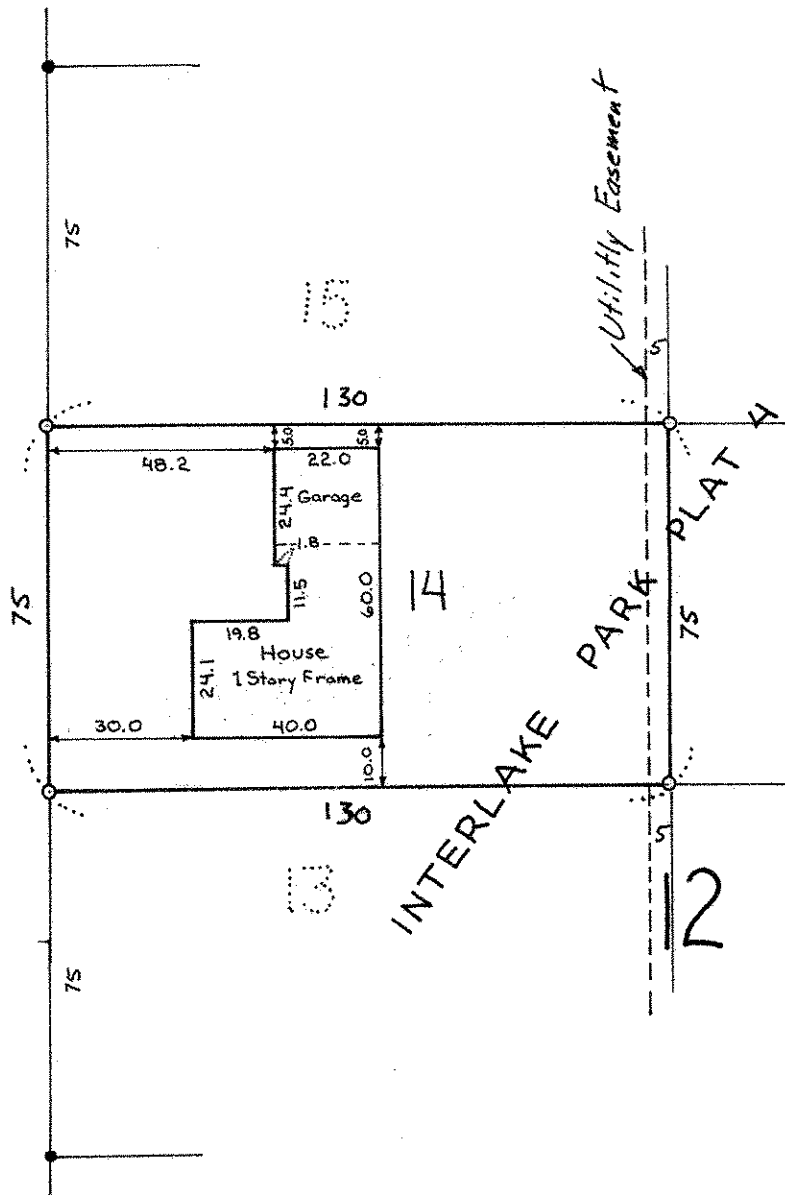
By Charles O. Georgi
REGISTERED LAND SURVEYOR

Description:

Lot 14,
Block 12,
Interlake Park Plat. 4,
Ramsey County,
Minnesota.



CAROLYN LANE



- o denotes iron pipe monument.
- denotes iron pipe monument found in place