

FROM THE OFFICE OF

CHARLES O. GEORGI COMPANY

2215 West County Road B

Saint Paul, Minnesota 55113

REGISTERED CIVIL ENGINEER AND LAND SURVEYOR

**Certificate
of Survey**

I Hereby Certify that this plat shows a survey made by me of the property described on this plat, and that the corners are correctly placed as shown, and that all locations have been correctly shown.

Surveyed For *John Abbott*

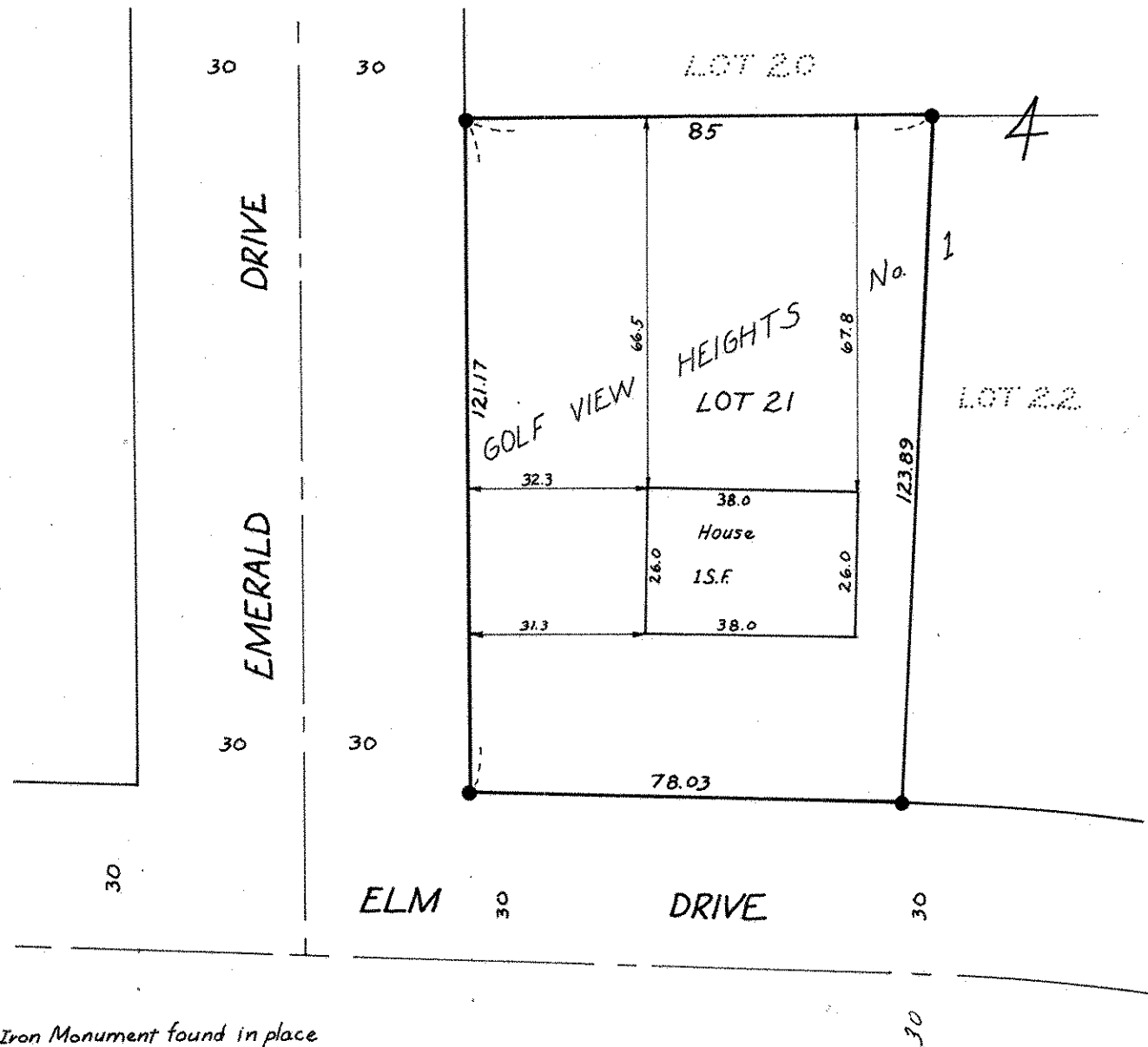
Date *September, 1970*

Scale *1" = 30'*

By *Charles O. Georgi*
REGISTERED LAND SURVEYOR

Description:

Lot 21,
Block 4,
Golf View Heights No. 1,
Ramsey County, Minnesota.



● Denotes Iron Monument found in place