

FROM THE OFFICE OF

**CHARLES O. GEORGI COMPANY**

2215 West County Road B

Saint Paul, Minnesota 55113

REGISTERED CIVIL ENGINEER AND LAND SURVEYOR

**Certificate  
of Survey**

*I Hereby Certify that this plat shows a survey made by me of the property described on this plat, and that the corners are correctly placed as shown, and that all locations have been correctly shown.*

Surveyed For Ron Auger

Date Sept. 1970

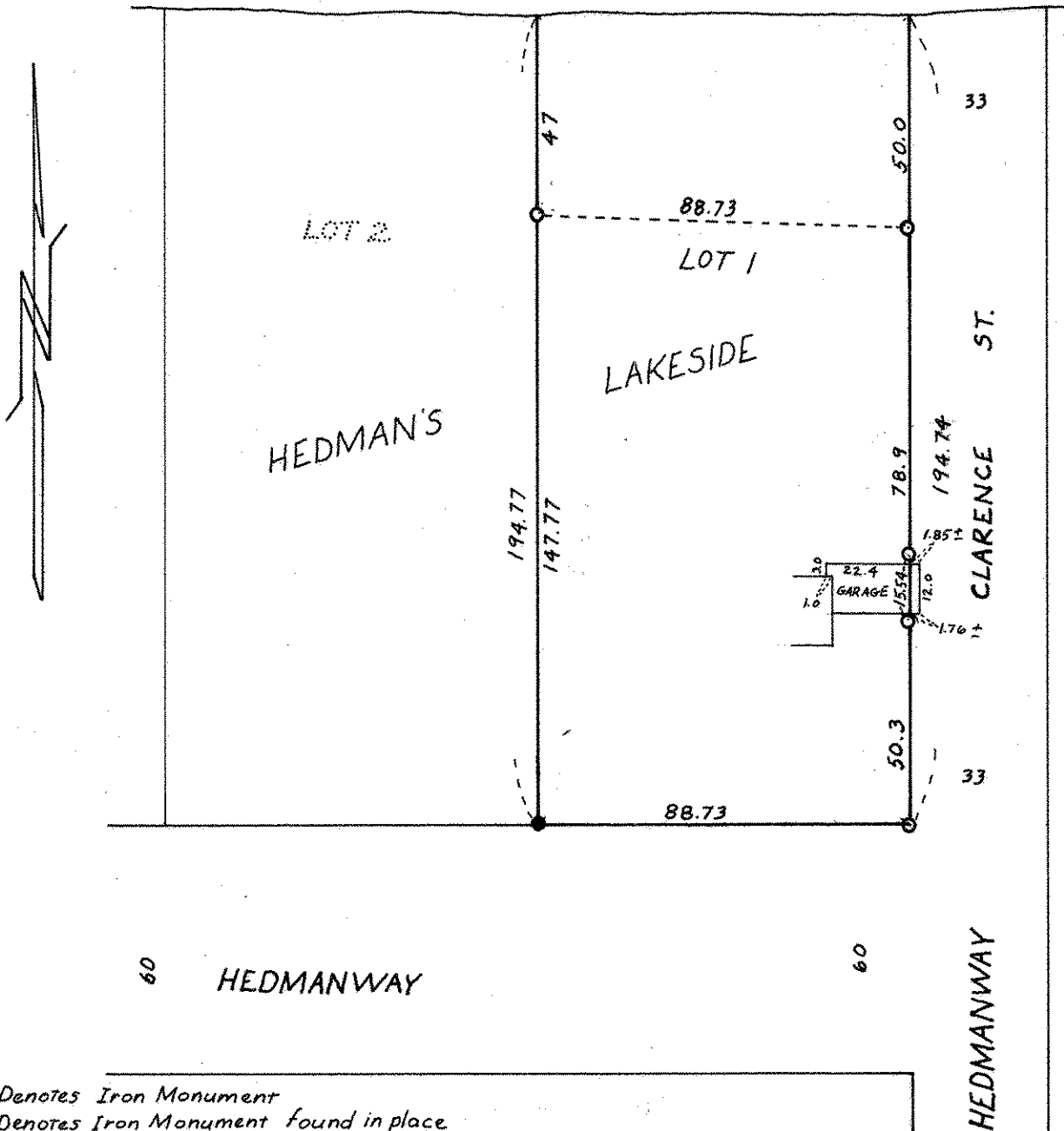
Scale 1"=40'

By Charles O. Georgi  
REGISTERED LAND SURVEYOR

**Description:**

Lot 1,  
Hedman's Lakeside,  
Ramsey County, Minnesota.

BIRCH LAKE



- Denotes Iron Monument
- Denotes Iron Monument found in place