

FROM THE OFFICE OF

# CHARLES O. GEORGI COMPANY

2215 West County Road B

Saint Paul, Minnesota 55113

REGISTERED CIVIL ENGINEER AND LAND SURVEYOR

## Certificate of Survey

I Hereby Certify that this plat shows a survey made by me of the property described on this plat, and that the corners are correctly placed as shown, and that all locations have been correctly shown.

Surveyed For *Bacchus Hills Int.*

Date *Jan. 1969*

Scale *1" = 40'*

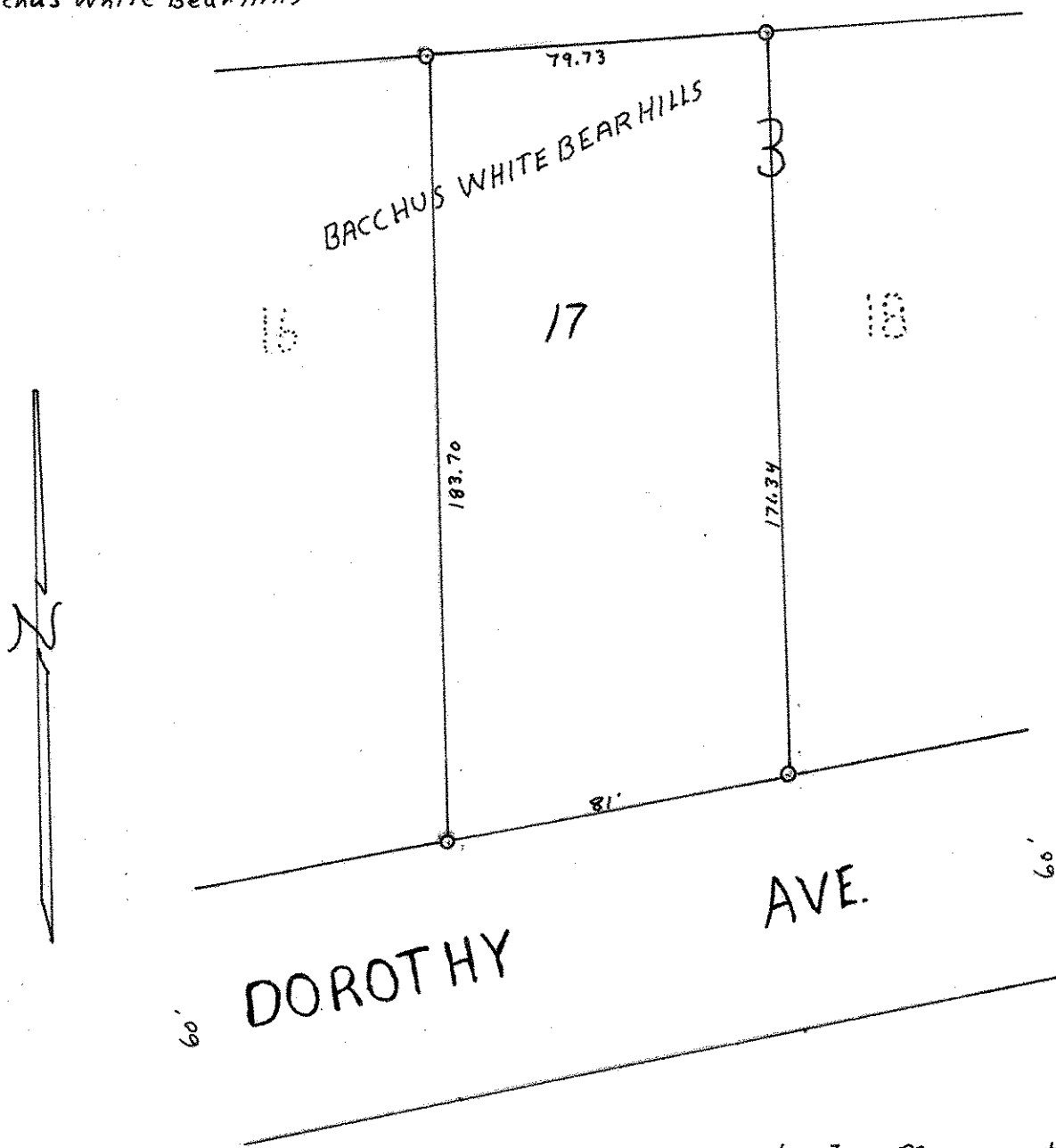
By *Charles O. Georgi*  
REGISTERED LAND SURVEYOR

**Description:**

*Lot 17*

*Block 3*

*Bacchus White Bear Hills*



O Denotes Iron Monument