

SE 25, 30, 22

FROM THE OFFICE OF

CHARLES O. GEORGI COMPANY

2215 West County Road B

Saint Paul, Minnesota 55113

REGISTERED CIVIL ENGINEER AND LAND SURVEYOR

Certificate of Survey

I Hereby Certify that this plat shows a survey made by me of the property described on this plat, and that the corners are correctly placed as shown, and that all locations have been correctly shown.

Surveyed For *Bacchus, Inc.*

Date *Oct. 1969*

Scale *1" = 40'*

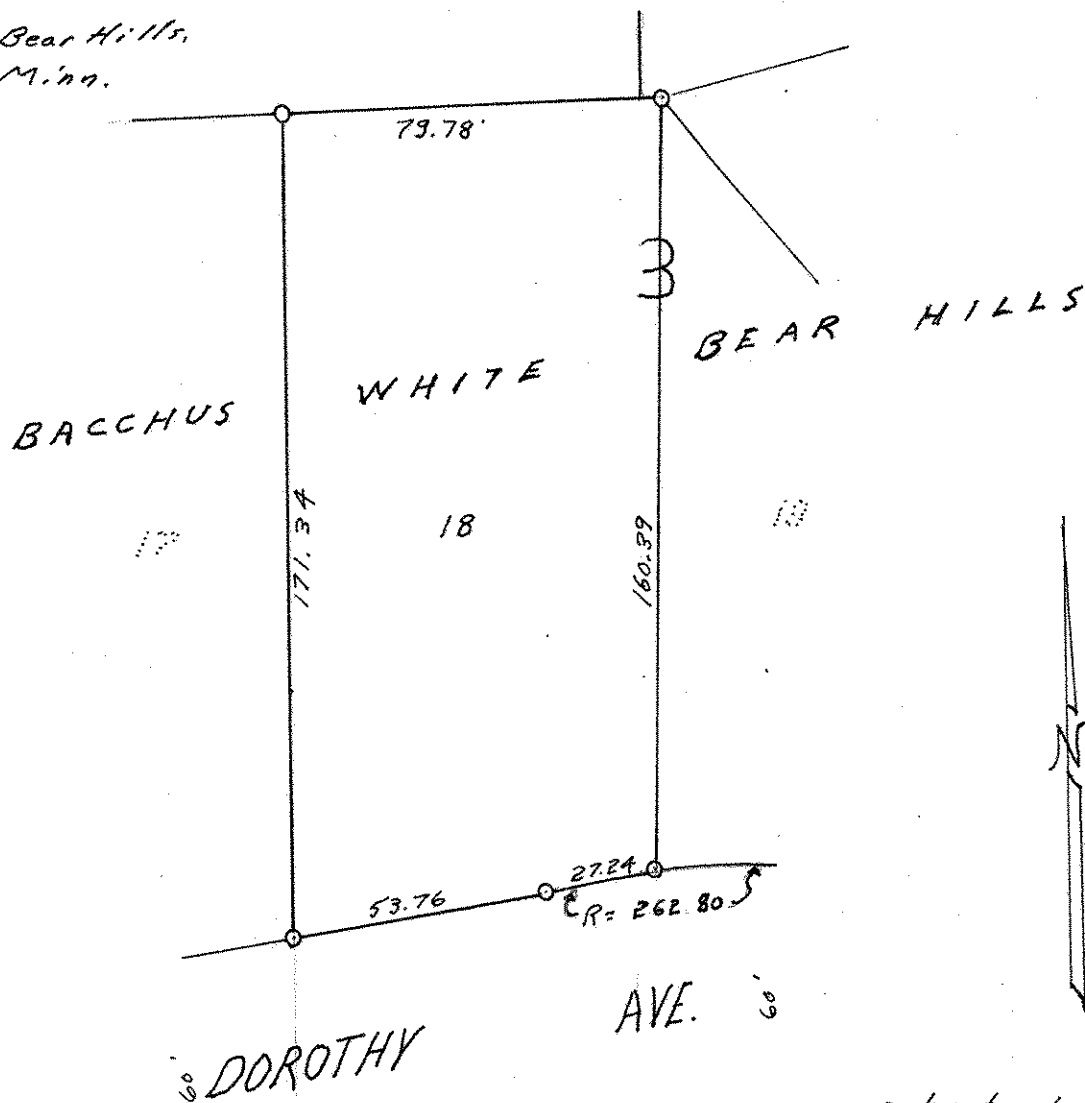
By

Charles O. Georgi

REGISTERED LAND SURVEYOR

Description:

*Lot 18,
Block 3,
Bacchus White Bear Hills,
Ramsey County, Minn.*



o denotes iron monument