

FROM THE OFFICE OF

CHARLES O. GEORGI COMPANY

2215 West County Road B

Saint Paul, Minnesota 55113

REGISTERED CIVIL ENGINEER AND LAND SURVEYOR



Certificate of Survey

I Hereby Certify that this plat shows a survey made by me of the property described on this plat, and that the corners are correctly placed as shown, and that all locations have been correctly shown.

Surveyed For Bacchus Inc......

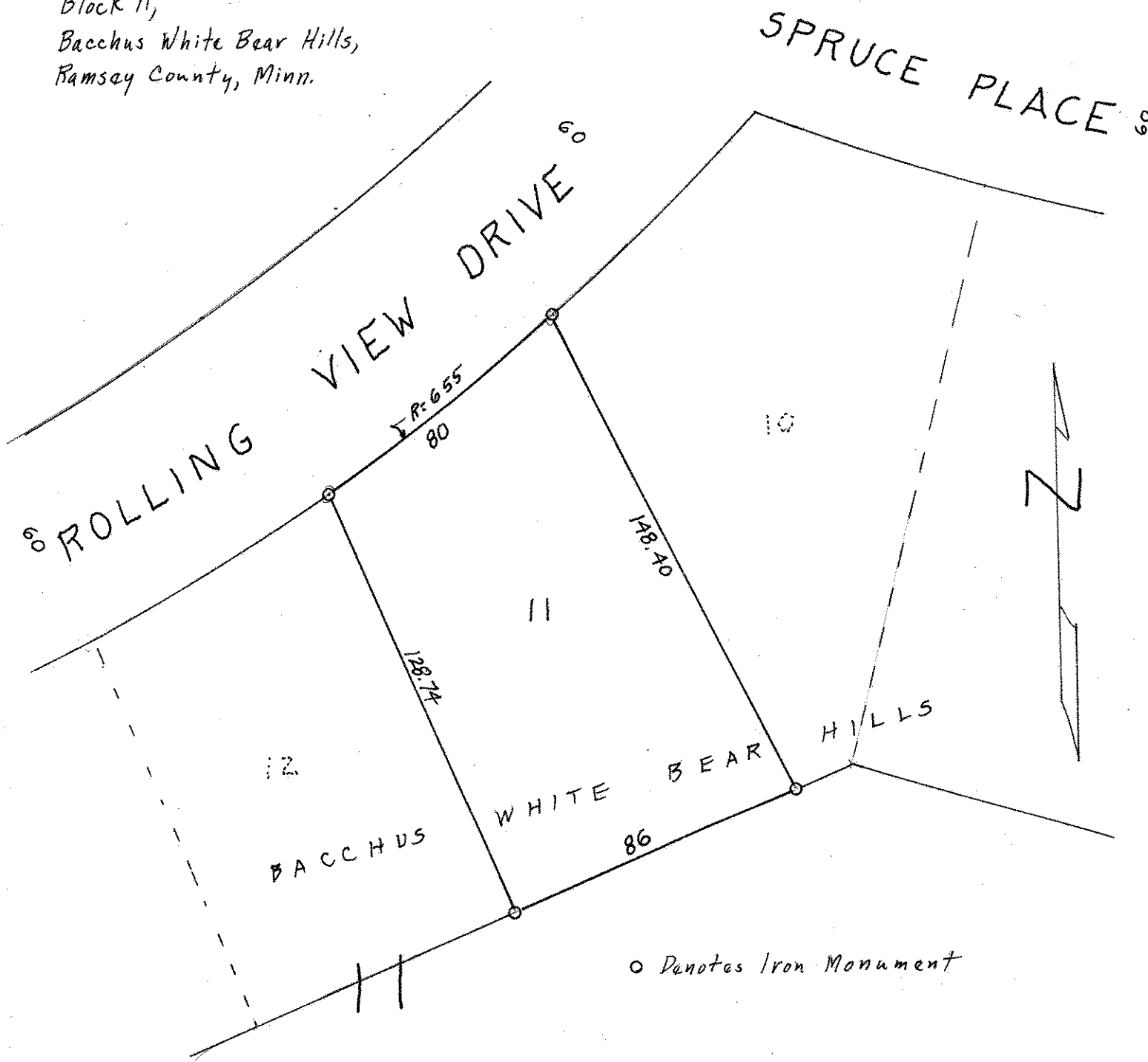
Date January 1970.....

Scale 1" = 40'.....

By Charles O. Georgi
REGISTERED LAND SURVEYOR

Description:

Lot 11,
Block 11,
Bacchus White Bear Hills,
Ramsay County, Minn.



○ Denotes Iron Monument