

FROM THE OFFICE OF

CHARLES O. GEORGI COMPANY

2215 West County Road B

Saint Paul, Minnesota 55113

REGISTERED CIVIL ENGINEER AND LAND SURVEYOR

Certificate of Survey

I Hereby Certify that this plat shows a survey made by me of the property described on this plat, and that the corners are correctly placed as shown, and that all locations have been correctly shown.

Surveyed For *Kenneth W. Bacchus Inc.*

Date *March 1970*

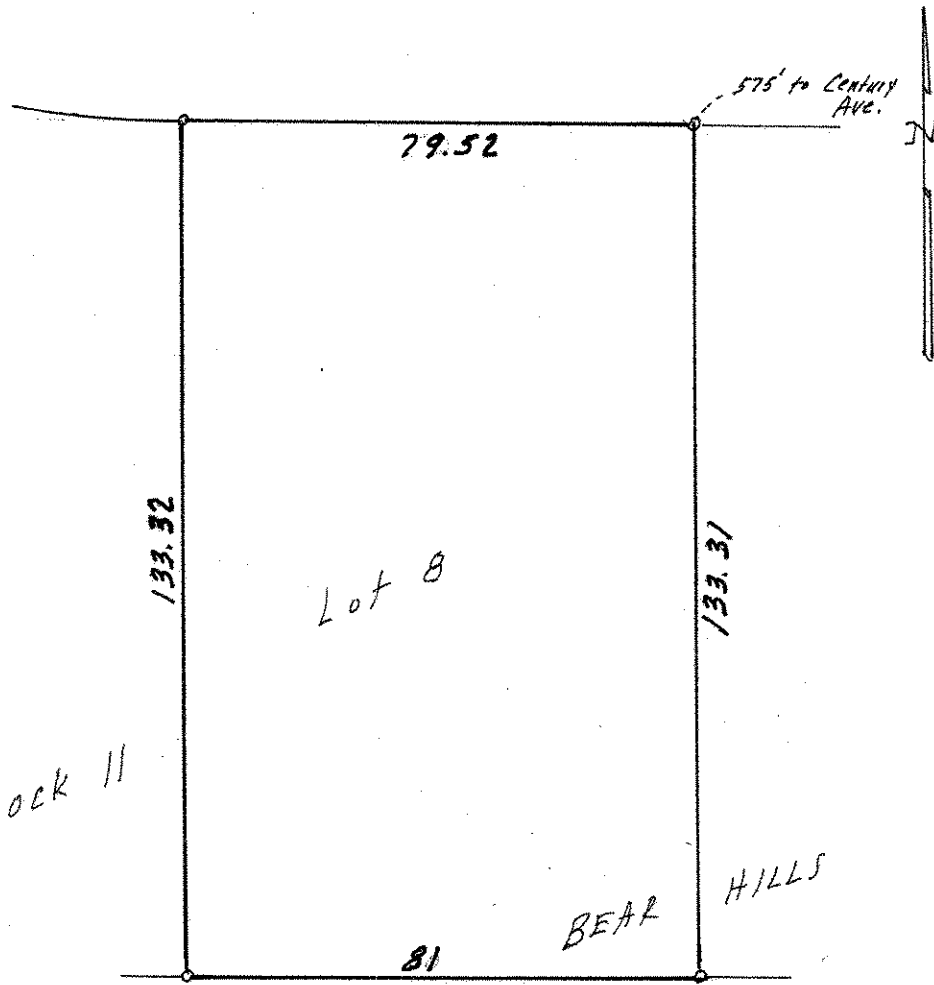
Scale *1"=30'*

By *Charles O. Georgi*
REGISTERED LAND SURVEYOR

Description:

*Lot 8,
Block II
Bacchus White Bear Hills
Ramsey County, Minn.*

60' SPRUCE PLACE



o Denotes Iron Monument

BACCHUS WHITE