

FROM THE OFFICE OF

# CHARLES O. GEORGI COMPANY

2215 West County Road B Saint Paul, Minnesota 55113

REGISTERED CIVIL ENGINEER AND LAND SURVEYOR

## Certificate of Survey

I Hereby Certify that this plat shows a survey made by me of the property described on this plat, and that the corners are correctly placed as shown, and that all locations have been correctly shown.

Surveyed For *Kenneth W. Bacchus Inc*

Date *March 1970*

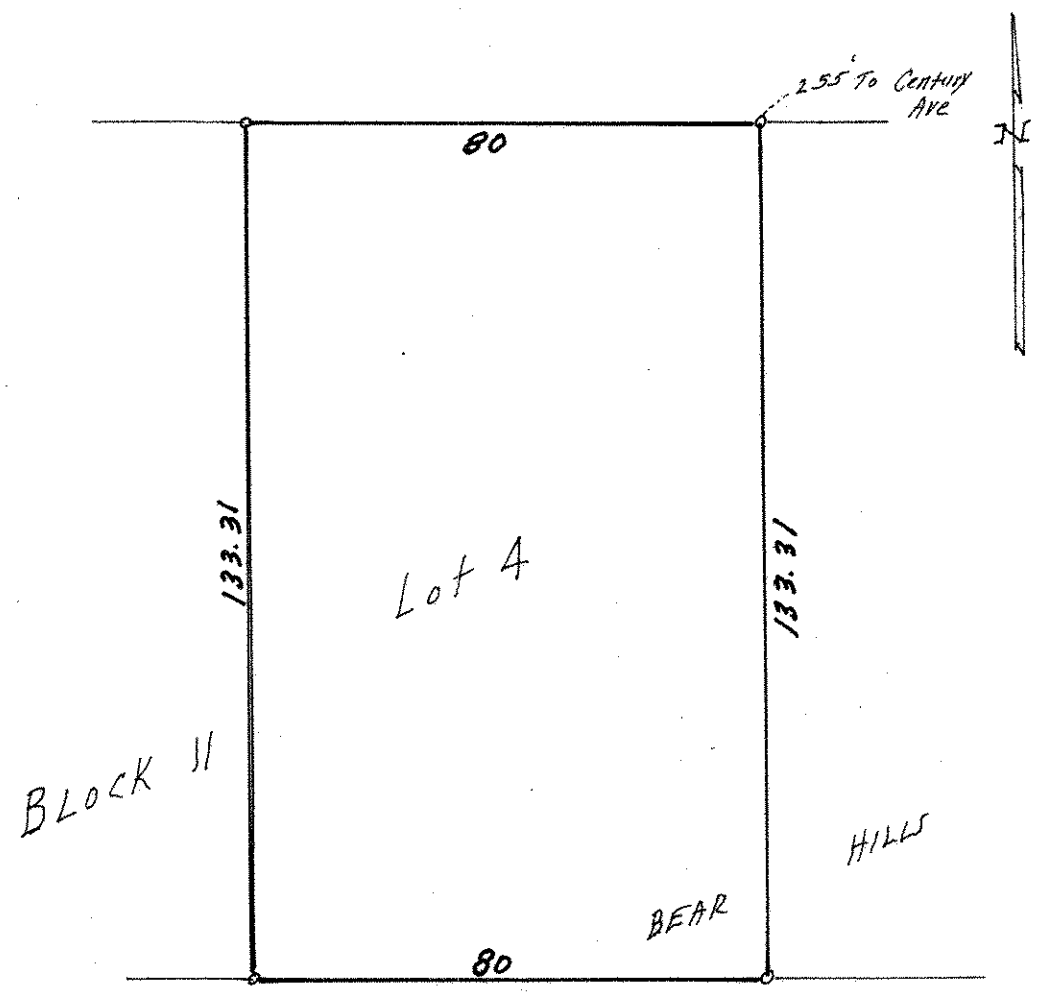
Scale *1" = 30'*

By *Charles O. Georgi*  
REGISTERED LAND SURVEYOR

**Description:**

*Lot 4,  
Block 11  
Bacchus White Bear Hills  
Ramsey County, Minn.*

*60 SPRUCE PLACE*



*o Denotes Iron Monument*

*BACCHUS WHITE*