

FROM THE OFFICE OF

CHARLES O. GEORGI COMPANY

2215 West County Road B

Saint Paul, Minnesota 55113

REGISTERED CIVIL ENGINEER AND LAND SURVEYOR

Certificate of Survey

I Hereby Certify that this plat shows a survey made by me of the property described on this plat, and that the corners are correctly placed as shown, and that all locations have been correctly shown.

Surveyed For Bacchus, Inc.

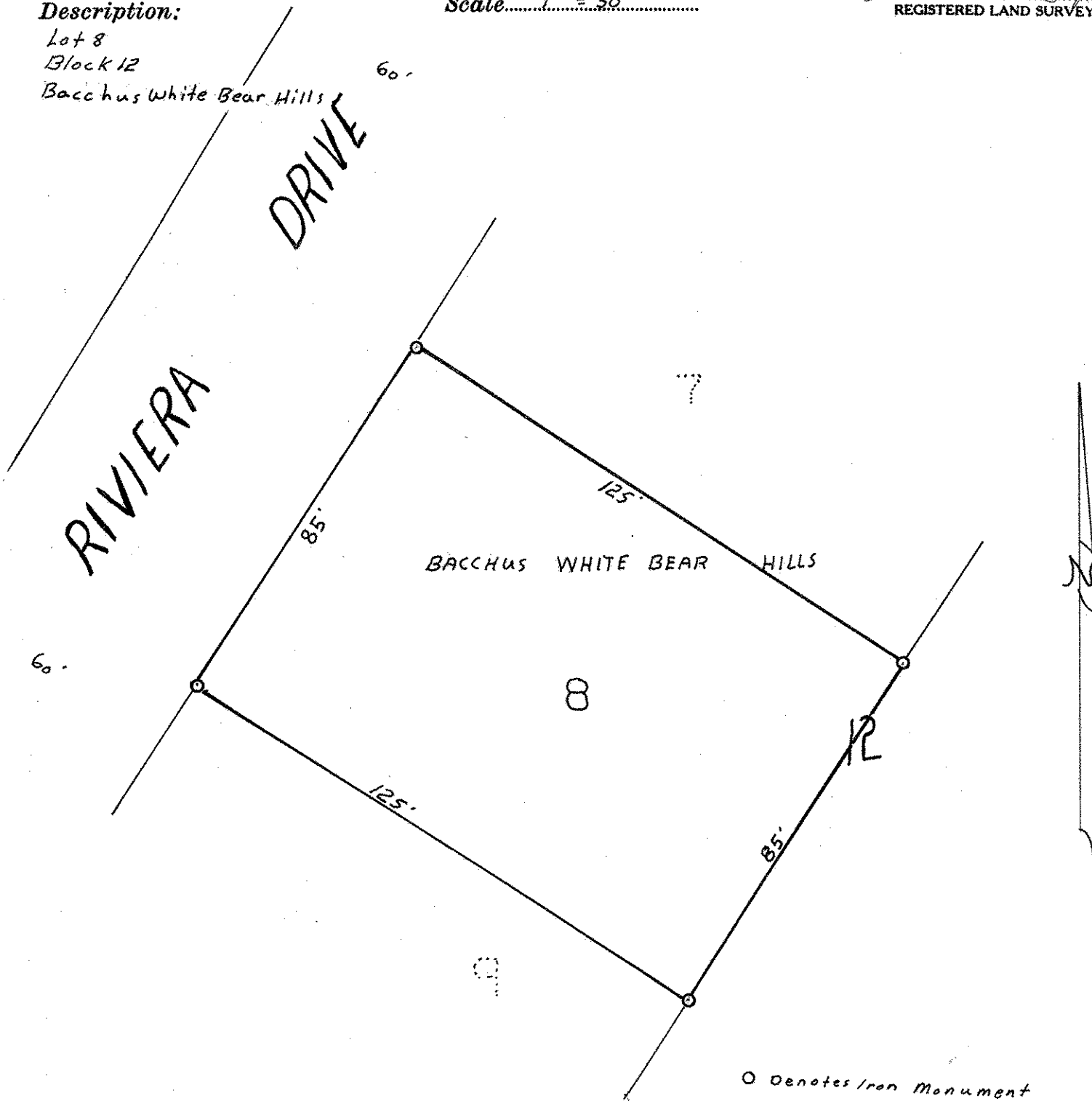
Date Feb 1969

Scale 1" = 30'

By Charles O. Georgi
REGISTERED LAND SURVEYOR

Description:

Lot 8
Block 12
Bacchus White Bear Hills 60'



O Denotes Iron Monument