

FROM THE OFFICE OF

CHARLES O. GEORGI COMPANY

2215 West County Road B

Saint Paul, Minnesota 55113

REGISTERED CIVIL ENGINEER AND LAND SURVEYOR



I Hereby Certify that this plat shows a survey made by me of the property described on this plat, and that the corners are correctly placed as shown, and that all locations have been correctly shown.

Surveyed For..... *Bacchus, Inc.*

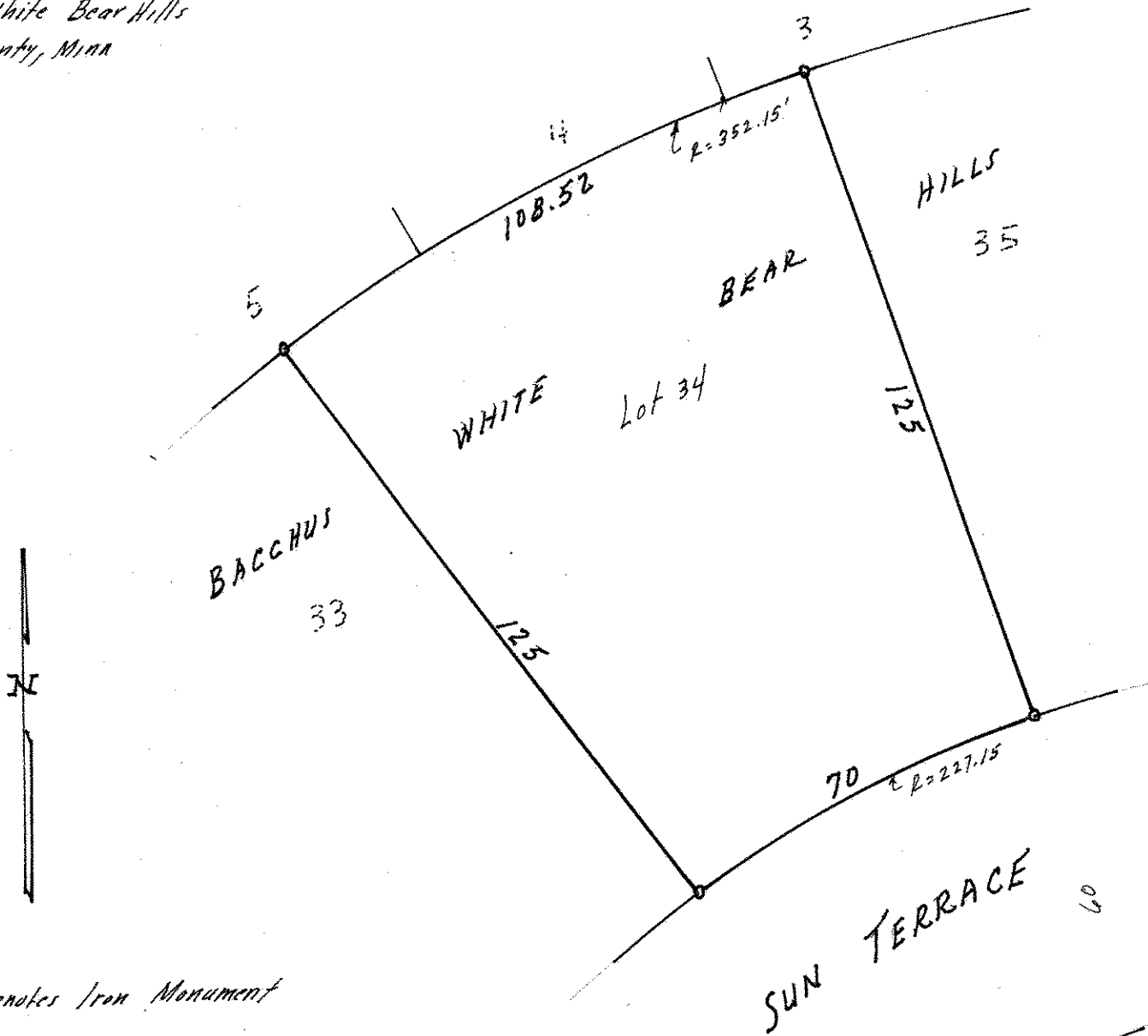
Date..... *Sept. 1970*

Scale..... *1" = 30'*

By..... *Charles O. Georgi*
REGISTERED LAND SURVEYOR

Description:

*Lot 34, Block 12,
Bacchus White Bear Hills
Ramsey County, Minn*



o Denotes Iron Monument