

FROM THE OFFICE OF

# CHARLES O. GEORGI COMPANY

2215 West County Road B

Saint Paul, Minnesota 55113

REGISTERED CIVIL ENGINEER AND LAND SURVEYOR



I Hereby Certify that this plat shows a survey made by me of the property described on this plat, and that the corners are correctly placed as shown, and that all locations have been correctly shown.

Surveyed For *Bacchus Inc.*

Date *Jan. 1969*

Scale *1" = 30'*

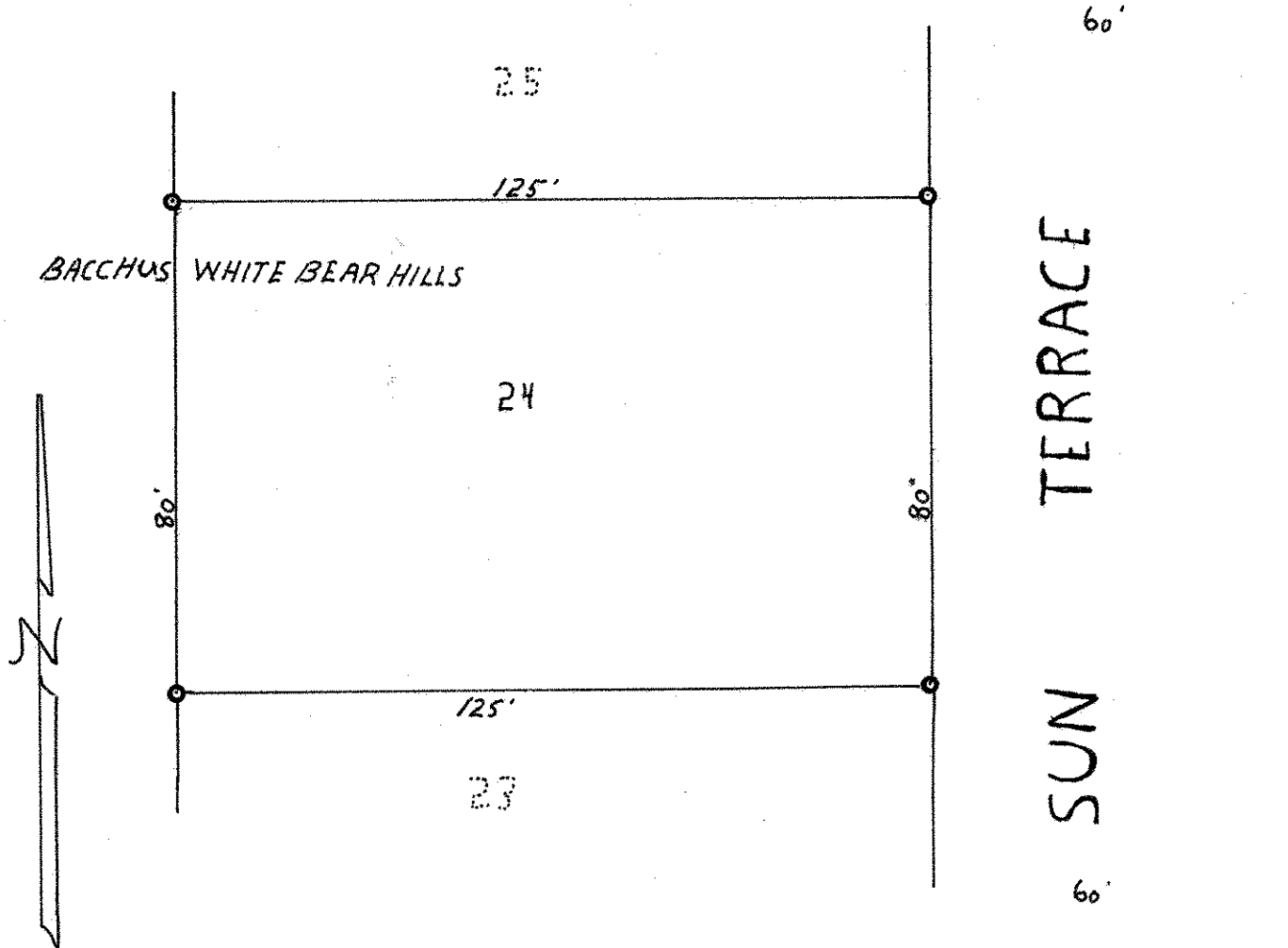
By *Charles O. Georgi*  
REGISTERED LAND SURVEYOR

**Description:**

*Lot 24*

*Block 12*

*Bacchus White Bear Hills*



● Denotes Iron Monument