

SE 25 30 22

FROM THE OFFICE OF

CHARLES O. GEORGI COMPANY

2215 West County Road B Saint Paul, Minnesota 55113

REGISTERED CIVIL ENGINEER AND LAND SURVEYOR

Certificate of Survey

I Hereby Certify that this plat shows a survey made by me of the property described on this plat, and that the corners are correctly placed as shown, and that all locations have been correctly shown.

Surveyed For... *Kenneth W. Bacchus*

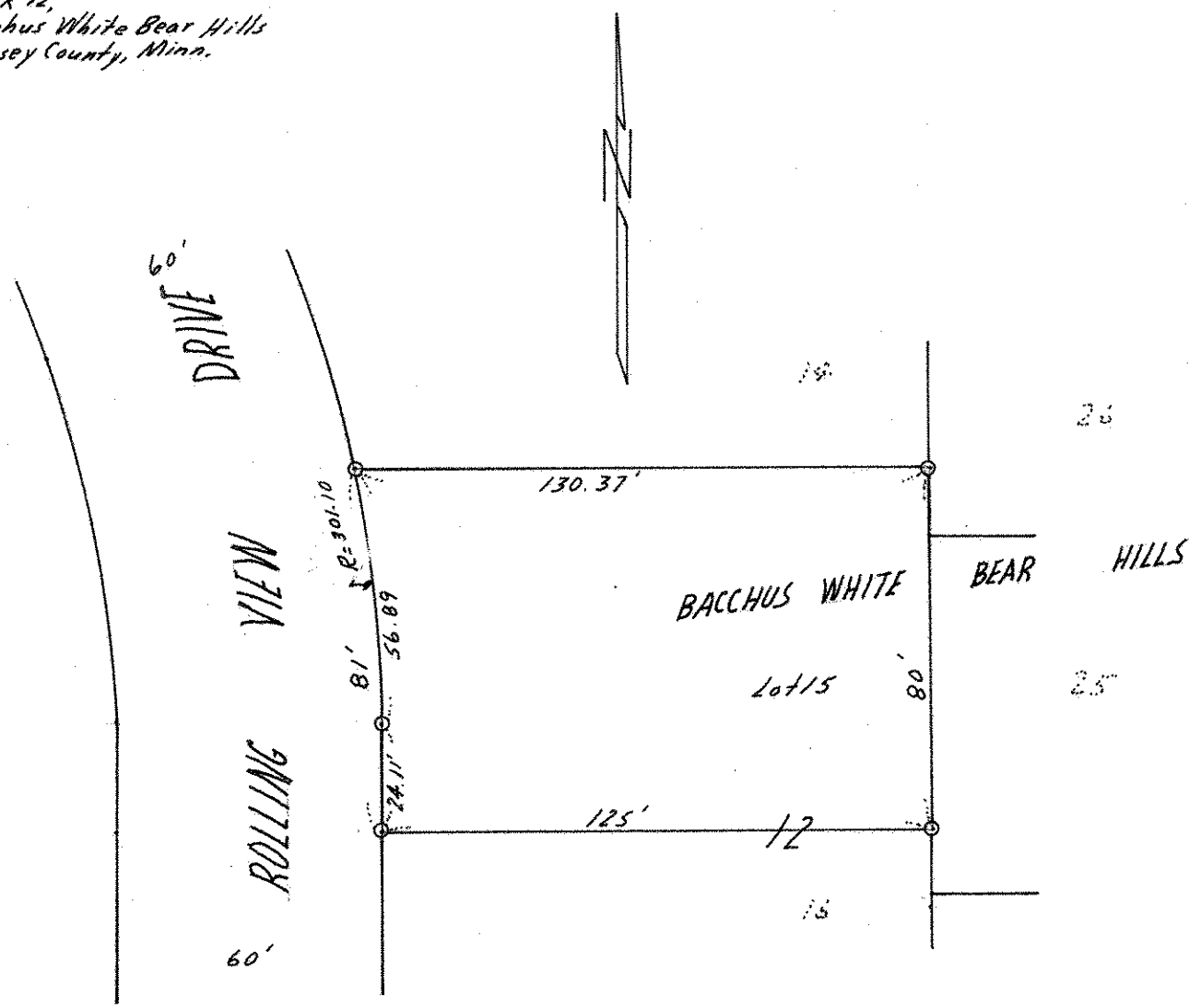
Date... *April 1970*

Scale... *1" = 40'*

By... *Charles O. Georgi*
REGISTERED LAND SURVEYOR

Description:

*Lot 15,
Block 12,
Bacchus White Bear Hills
Ramsey County, Minn.*



○ Denotes Iron Monument