

FROM THE OFFICE OF

CHARLES O. GEORGI COMPANY

2215 West County Road B

Saint Paul, Minnesota 55113

REGISTERED CIVIL ENGINEER AND LAND SURVEYOR

Certificate of Survey

I Hereby Certify that this plat shows a survey made by me of the property described on this plat, and that the corners are correctly placed as shown, and that all locations have been correctly shown.

Surveyed For *Bacchus, Inc*

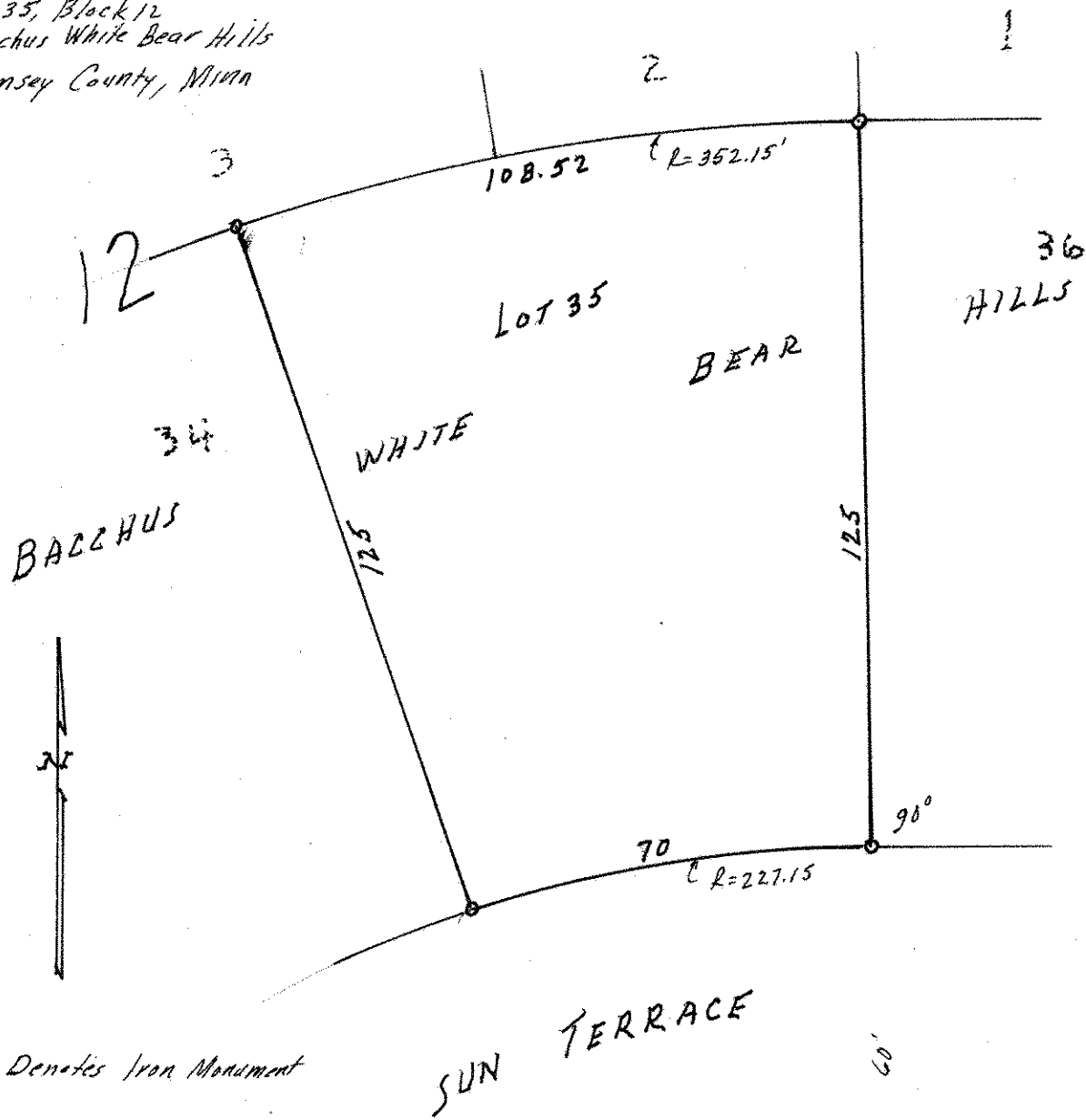
Date *Sept 1970*

Scale *1"=30'*

By *Charles O. Georgi*
REGISTERED LAND SURVEYOR

Description:

*Lot 35, Block 12
Bacchus White Bear Hills
Ramsey County, Minn*



o Denotes Iron Monument