

JW 24 30 72

FROM THE OFFICE OF

CHARLES O. GEORGI COMPANY

2215 West County Road B

Saint Paul, Minnesota 55113

REGISTERED CIVIL ENGINEER AND LAND SURVEYOR

Certificate of Survey

I Hereby Certify that this plat shows a survey made by me of the property described on this plat, and that the corners are correctly placed as shown, and that all locations have been correctly shown.

Surveyed For Dr. John A. Hetzler

Date June 1968

Scale 1" = 40'

By

Charles O. Georgi

REGISTERED LAND SURVEYOR

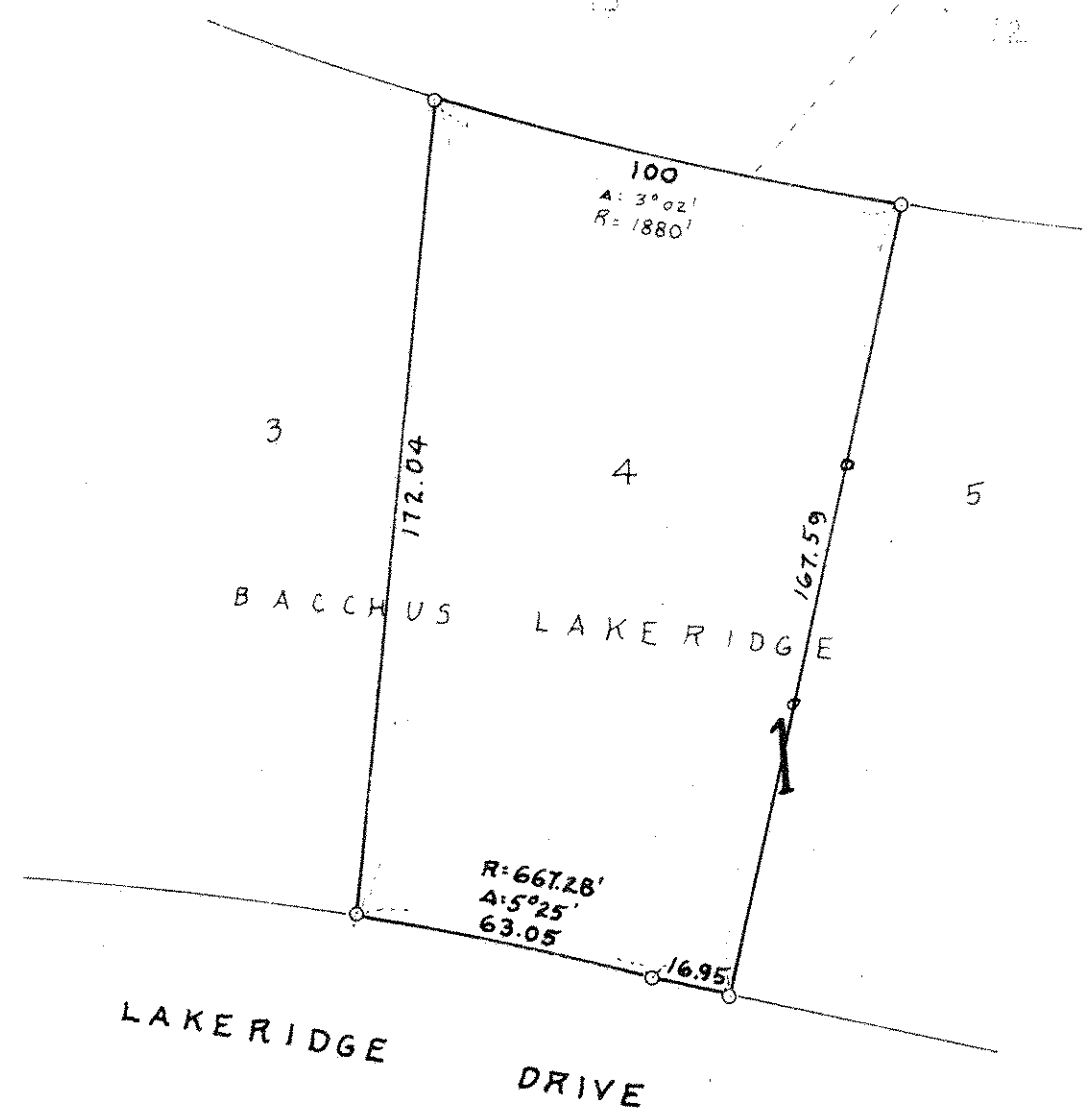
Description:

Lot 4
Block 1
Bacchus Lakeridge
Ram Co County, Minn.

THOMAS LAKERIDGE No. 1

13

12



o Denotes Iron Monument