

SW 24 30 22

FROM THE OFFICE OF

# CHARLES O. GEORGI COMPANY

2215 West County Road B

Saint Paul, Minnesota 55113

REGISTERED CIVIL ENGINEER AND LAND SURVEYOR

## Certificate of Survey

I Heroby Certify that this plat shows a survey made by me of the property described on this plat, and that the corners are correctly placed as shown, and that all locations have been correctly shown.

Surveyed For Curt LaPre

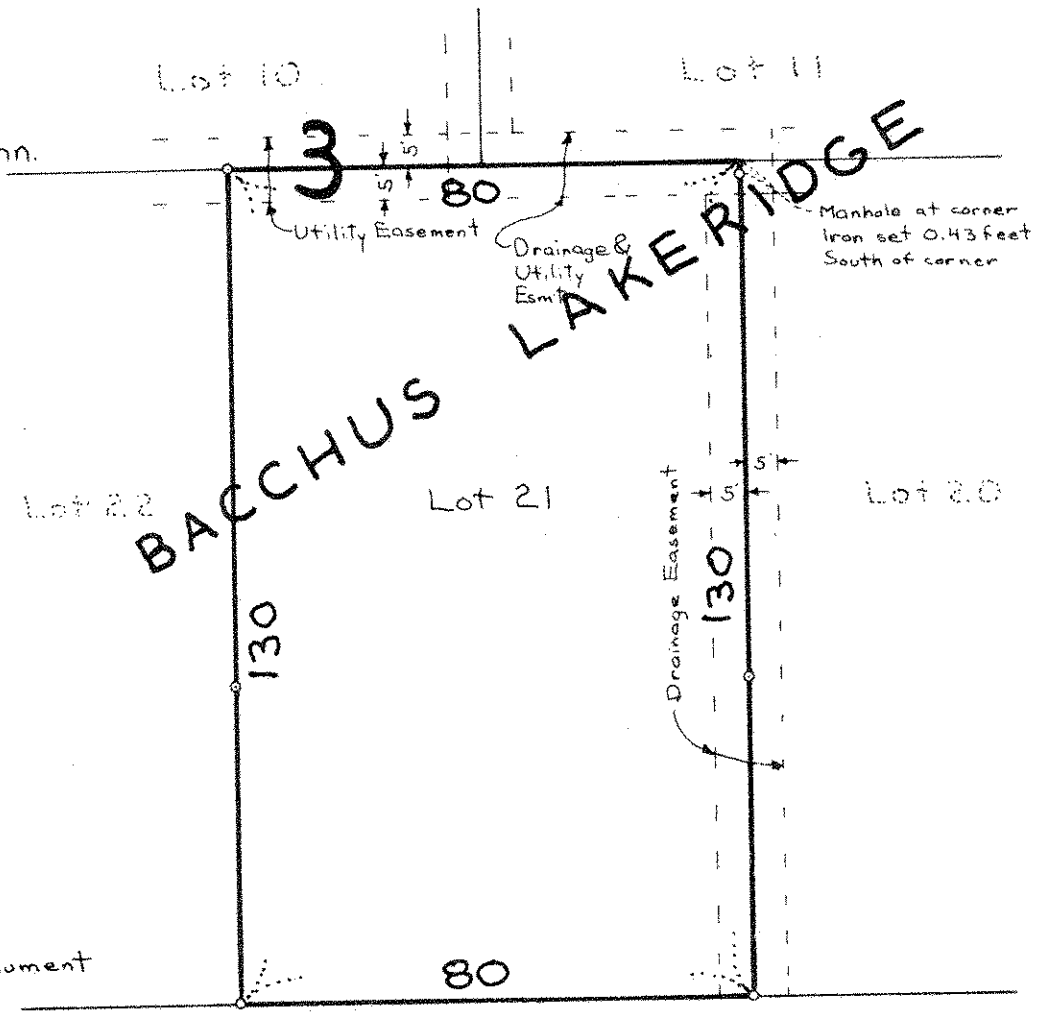
Date April 1977

Scale 1" = 30'

By Charles O. Georgi  
REGISTERED LAND SURVEYOR

**Description:**

Lot 21,  
Block 3,  
Bacchus Lakeridge,  
Ramsey County, Minn.



° Denotes Iron Pipe Monument

60 FLORAL DRIVE 60