

SW 25, 30, 22

FROM THE OFFICE OF

CHARLES O. GEORGI COMPANY

2215 West County Road B

Saint Paul, Minnesota 55113

REGISTERED CIVIL ENGINEER AND LAND SURVEYOR

Certificate of Survey

I Hereby Certify that this plat shows a survey made by me of the property described on this plat, and that the corners are correctly placed as shown, and that all locations have been correctly shown.

Surveyed For *Rodner Hoffman*

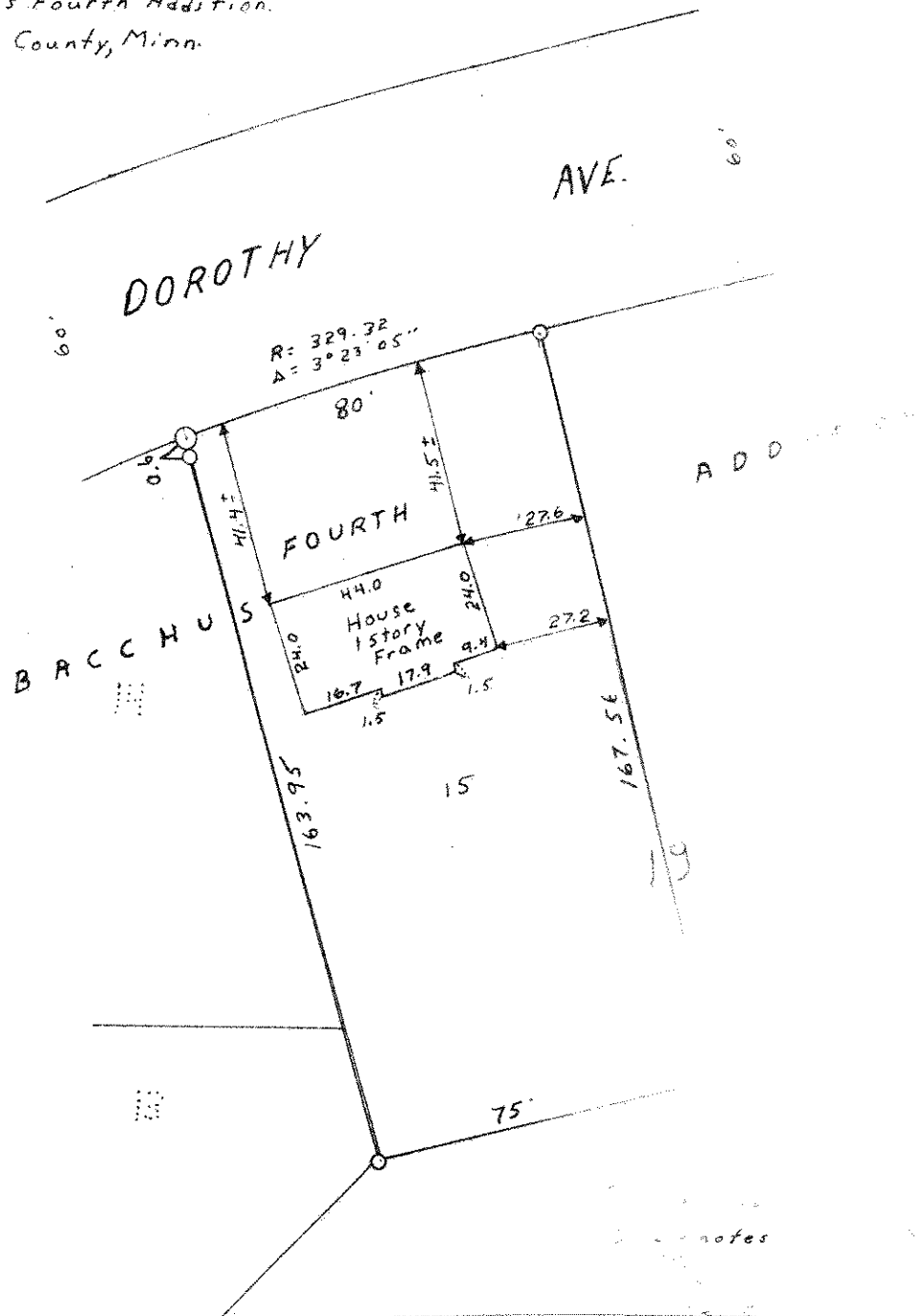
Date *May 1969*

Scale *1" = 40'*

By *Charles O. Georgi*
REGISTERED LAND SURVEYOR

Description:

Lot 15,
Block 19,
Bacchus Fourth Addition,
Ramsey County, Minn.



notes Monument