

FROM THE OFFICE OF

CHARLES O. GEORGI COMPANY

2215 West County Road B

Saint Paul, Minnesota 55113

REGISTERED CIVIL ENGINEER AND LAND SURVEYOR

**Certificate
of Survey**

I Heroby Certify that this plat shows a survey made by me of the property described on this plat, and that the corners are correctly placed as shown, and that all locations have been correctly shown.

Surveyed For Dick Carlson

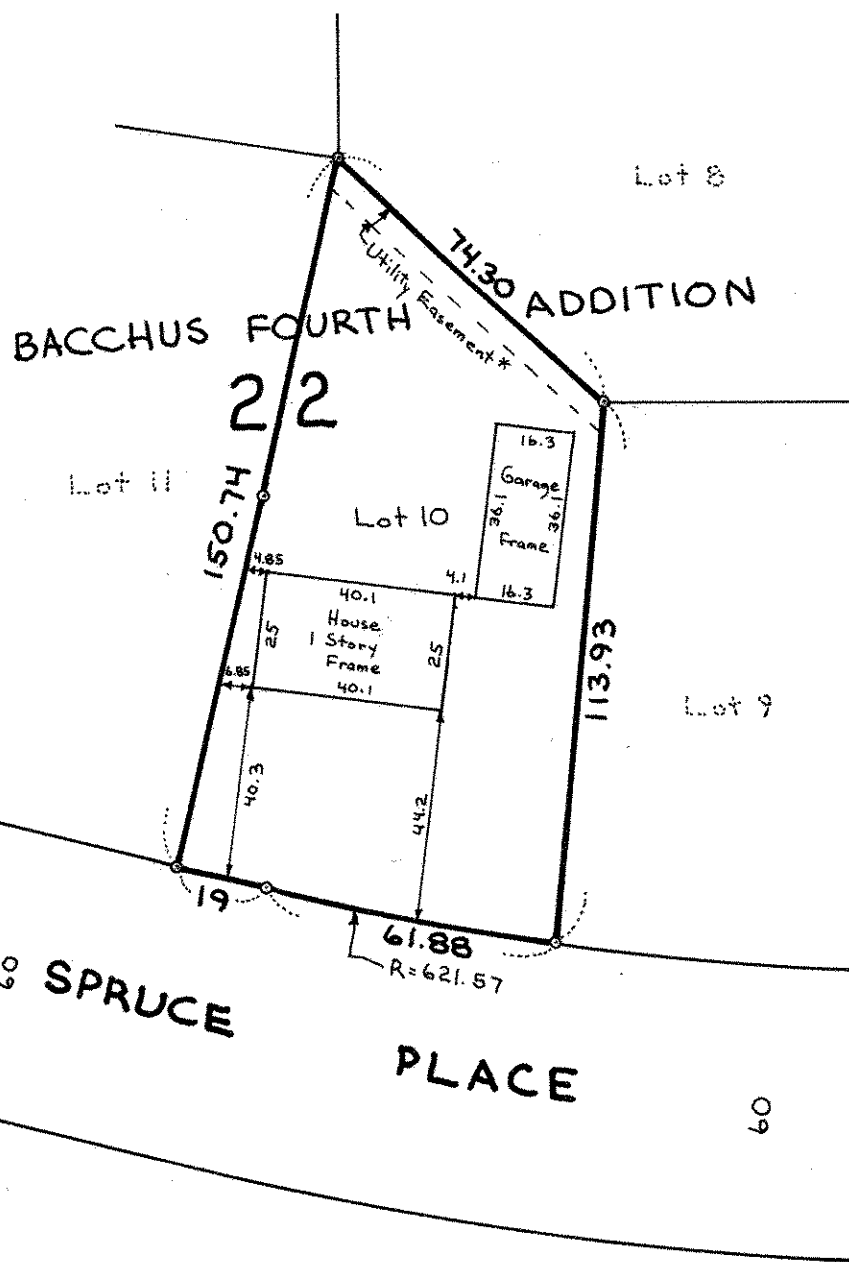
Date May 1977

Scale 1" = 40'

By Charles O. Georgi
REGISTERED LAND SURVEYOR

Description:

Lot 10,
Block 22,
Bacchus Fourth Addition,
Ramsey County, Minn.



- o Denotes Iron Pipe Monument
- Easements are per plat only
- *Width of easement not shown on plat. Codes required 5' at time.