

SW 32 30 22

**Certificate
of Survey**

From the office of
GEORGI-SCHMIDT & ASSOC. INC.
3092 No. Lexington Ave., Roseville, Mn. 55113
LAND SURVEYING
483-4408

I Hereby Certify that this plat shows a survey made by me of the property described on this plat, and that the corners are correctly placed as shown, and that all locations have been correctly shown.

Job Number: 304

Surveyed For C & A Construction

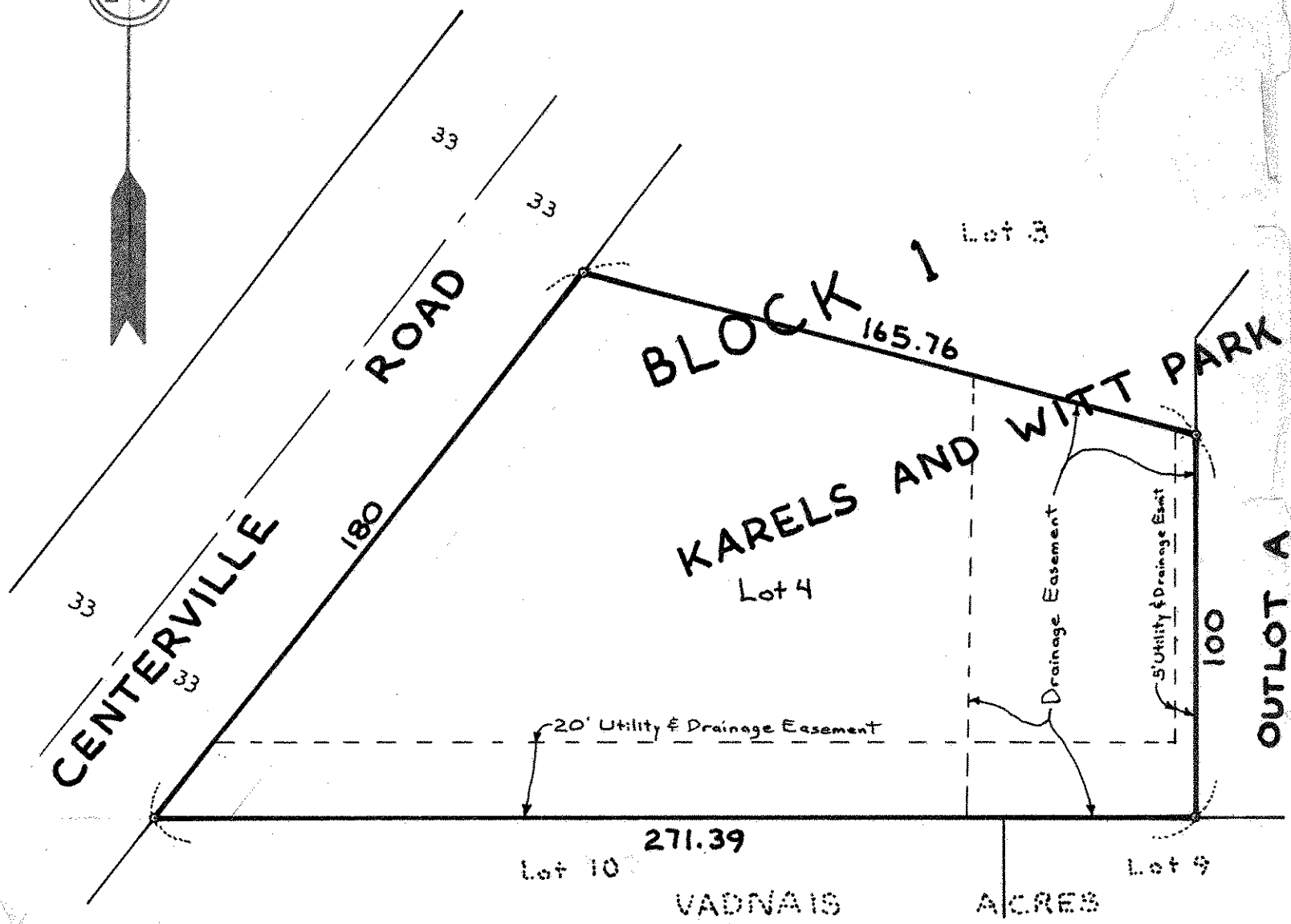
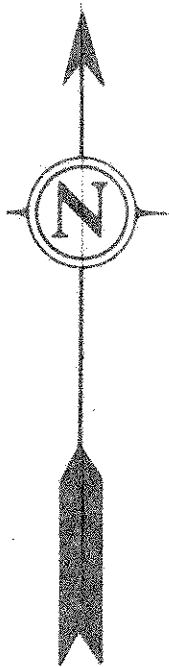
Date April 12, 1979

Scale 1" = 40'

By Donald W. Schmidt
REGISTERED LAND SURVEYOR

Description:

Lot 4,
Block 1,
Karels and Witt Park,
Ramsey County, Mn.



VADNAÏS

ACRES