

SW 15 30 22

FROM THE OFFICE OF

# CHARLES O. GEORGI COMPANY

2215 West County Road B

Saint Paul, Minnesota 55113

REGISTERED CIVIL ENGINEER AND LAND SURVEYOR



I Hereby Certify that this plat shows a survey made by me of the property described on this plat, and that the corners are correctly placed as shown, and that all locations have been correctly shown.

Surveyed For Vern Blanski

Date April 1976

Scale 1" = 40'

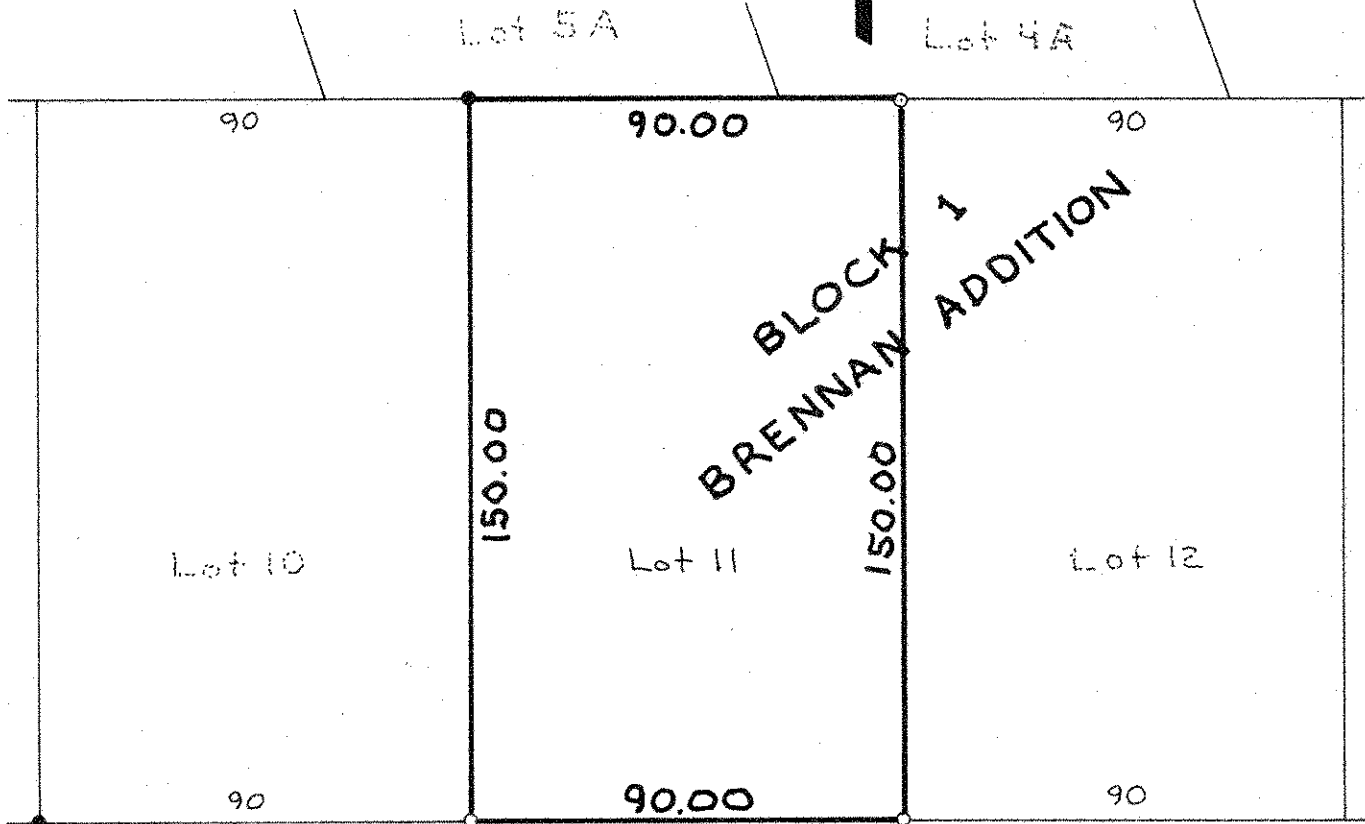
By Charles O. Georgi  
REGISTERED LAND SURVEYOR

**Description:**

Lot 11,  
Block 1,  
Brennan Addition,  
Ramsey County, Minnesota



- Denotes Iron Monument
- Denotes Iron Monument found in place



75

75

S.T. H.      NO. 96

South line of Section 15, T 30N, R 22W