

FROM THE OFFICE OF

CHARLES O. GEORGI COMPANY

2215 West County Road B

Saint Paul, Minnesota 55113

REGISTERED CIVIL ENGINEER AND LAND SURVEYOR



I Hereby Certify that this plat shows a survey made by me of the property described on this plat, and that the corners are correctly placed as shown, and that all locations have been correctly shown.

Surveyed For Tom Norberg

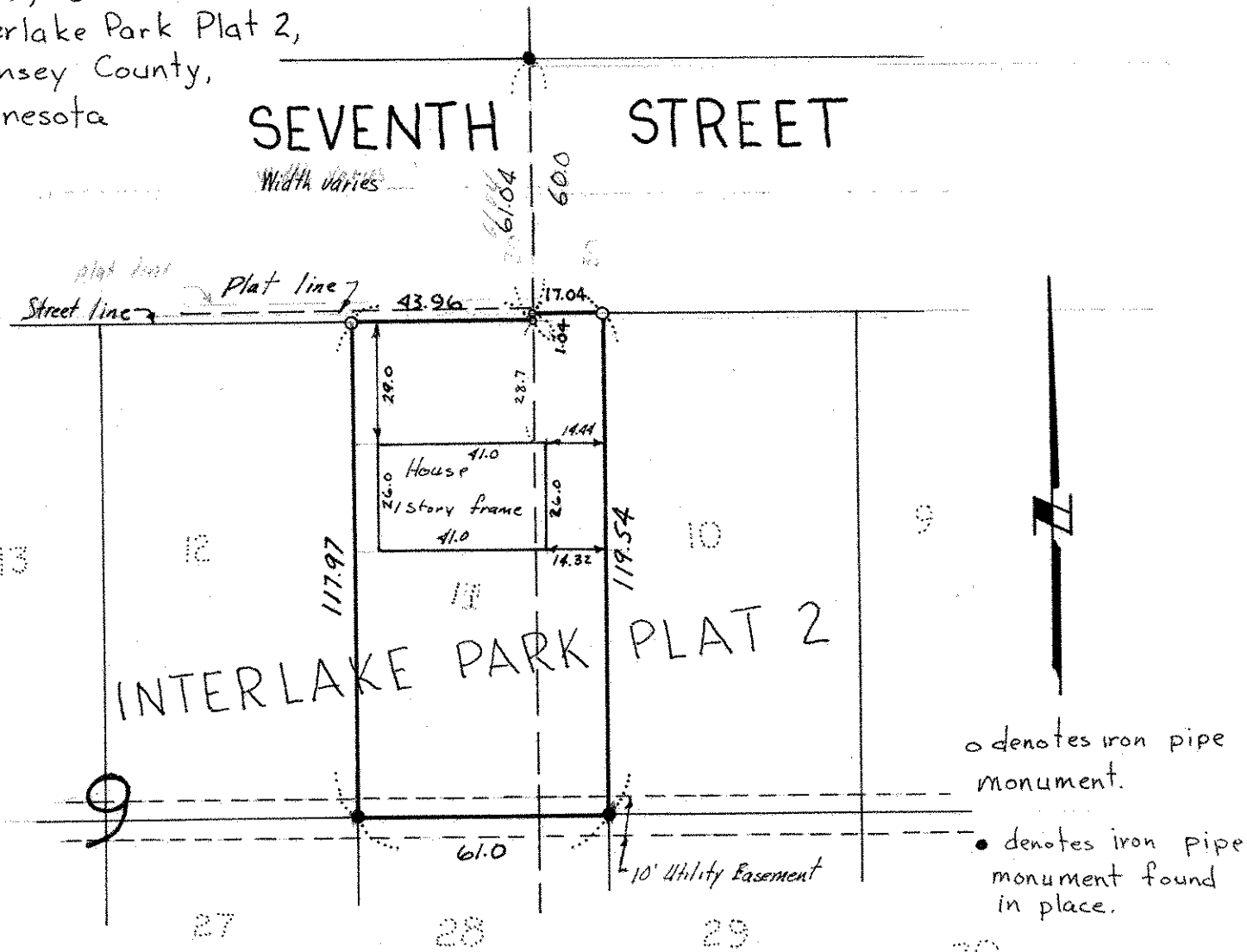
Date August 1975

Scale 1" = 40'

By Charles O. Georgi
REGISTERED LAND SURVEYOR

Description:

Lot 11, Block 9,
Interlake Park Plat 2,
Ramsey County,
Minnesota



o denotes iron pipe monument.

• denotes iron pipe monument found in place.

Surveyors Note:

it appears the plat line created a log to the North instead of to the South to fit property line. Intended street width was variable