

FROM THE OFFICE OF

# CHARLES O. GEORGI COMPANY

2215 West County Road B

Saint Paul, Minnesota 55113

REGISTERED CIVIL ENGINEER AND LAND SURVEYOR

## Certificate of Survey

*I Heroby Certify that this plat shows a survey made by me of the property described on this plat, and that the corners are correctly placed as shown, and that all locations have been correctly shown.*

Surveyed For Gregory Payette

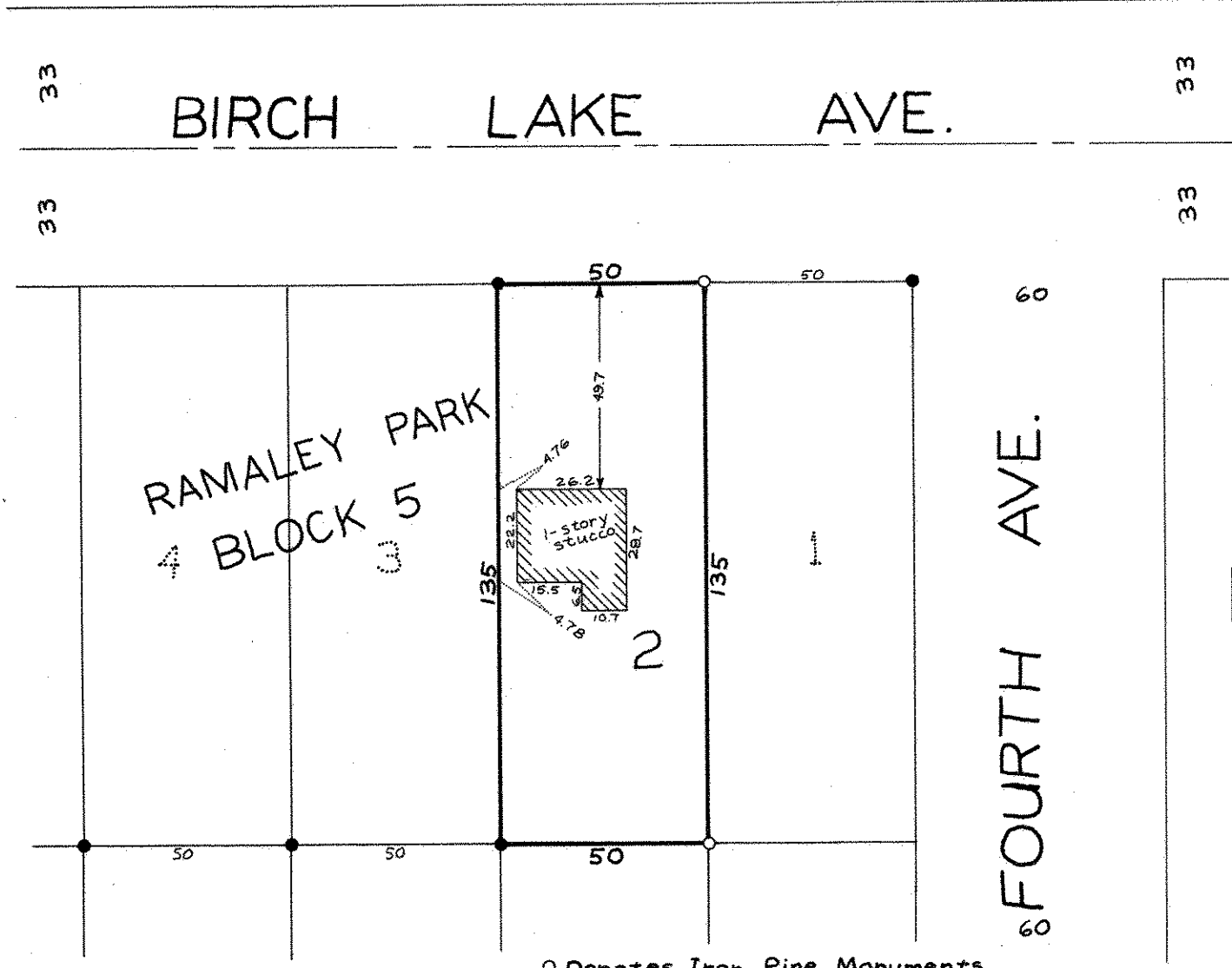
Date July 1976

Scale 1" = 40'

By Charles O. Georgi  
REGISTERED LAND SURVEYOR

**Description:**

Lot 2, Block 5,  
Ramaley Park,  
Ramsey County, Minnesota



○ Denotes Iron Pipe Monuments,

● Denotes Iron Pipe Monuments Found in Place