

FROM THE OFFICE OF

CHARLES O. GEORGI COMPANY

2215 West County Road B

Saint Paul, Minnesota 55113

REGISTERED CIVIL ENGINEER AND LAND SURVEYOR



**Certificate
of Survey**

I Hereby Certify that this plat shows a survey made by me of the property described on this plat, and that the corners are correctly placed as shown, and that all locations have been correctly shown.

Surveyed For D.E. Mueller

Date June, 1971

Scale 1" = 40'

By Charles O. Georgi
REGISTERED LAND SURVEYOR

Description:

Lot 20, Block 5, Aladdin Homesites,
Ramsey County, Minnesota.

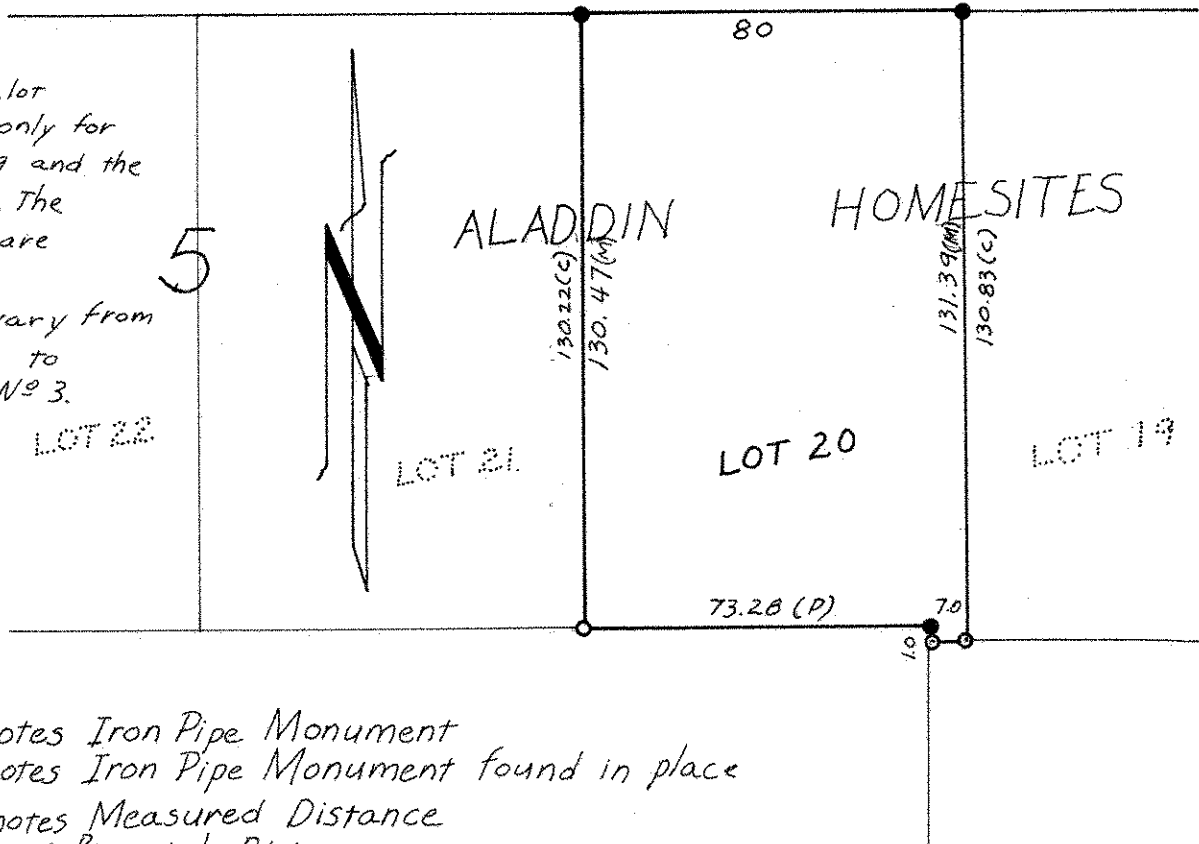
60 ROSE PLACE 60

Note:

On the original plan, lot dimensions are given only for the East line of lot 19 and the West line of lot 22. The distances for lot 20 are calculated.

Boundary angles vary from Aladdin Homesites to Aladdin Homesites No 3.

LOT 22



- Denotes Iron Pipe Monument
- Denotes Iron Pipe Monument found in place
- (M) Denotes Measured Distance
- (P) Denotes Prorated Distance
- (C) Denotes Calculated Distance