

FROM THE OFFICE OF

CHARLES O. GEORGI COMPANY

2215 West County Road B

Saint Paul 13, Minnesota

REGISTERED CIVIL ENGINEER AND LAND SURVEYOR



Certificate of Survey

I Hereby Certify that this plat shows a survey made by me of the property described on this plat, and that the corners are correctly placed as shown, and that all locations have been correctly shown.

Surveyed For Parranto Bros.
 Date May 1964 Revised Oct, 1964
 Scale 1" = 300'

By _____
 REGISTERED LAND SURVEYOR

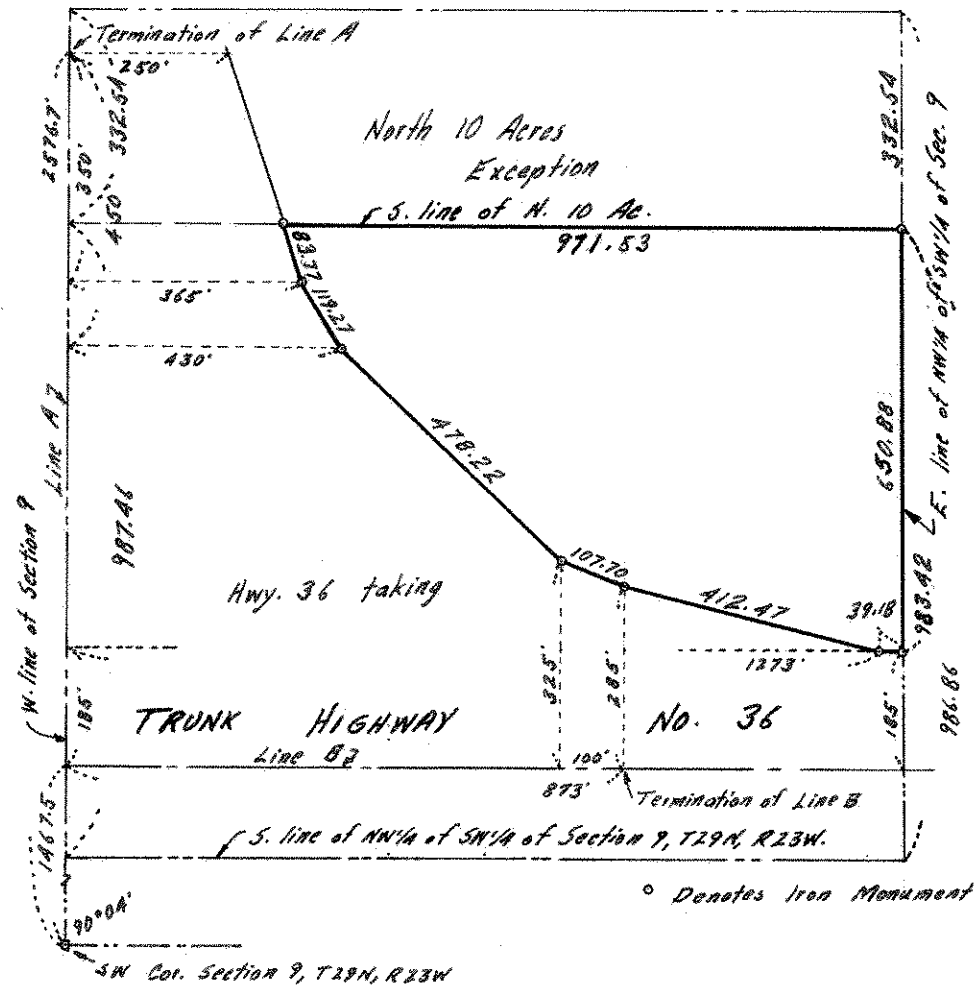
Description:

Void see below
 The South 990 feet of the NW 1/4 of the SW 1/4 in Section 9, T29N, R23W, according to Government Survey, except part taken for Trunk Highway No. 36

For Highway Taking see:

Early taking: Parcel 277 S.P. 6212
 (36-118-21-4)

Most recent taking: Parcel A77
 S.P. 6212 (362118-21-4)



DESCRIPTION:

The NW 1/4 of the SW 1/4 in Section 9, T29N, R23W, according to the government survey, except the North 10 Acres of said NW 1/4 of SW 1/4 and also except that part taken for Trunk Highway No. 36.

NOTE:

The North 10 Acres calculated as being the North 332.54 feet.