

FROM THE OFFICE OF

# CHARLES O. GEORGI COMPANY

2215 West County Road B

Saint Paul, Minnesota 55113

REGISTERED CIVIL ENGINEER AND LAND SURVEYOR



I Herby Certify that this plat shows a survey made by me of the property described on this plat, and that the corners are correctly placed as shown, and that all locations have been correctly shown.

Surveyed For Paul Nyman

Date June 1978

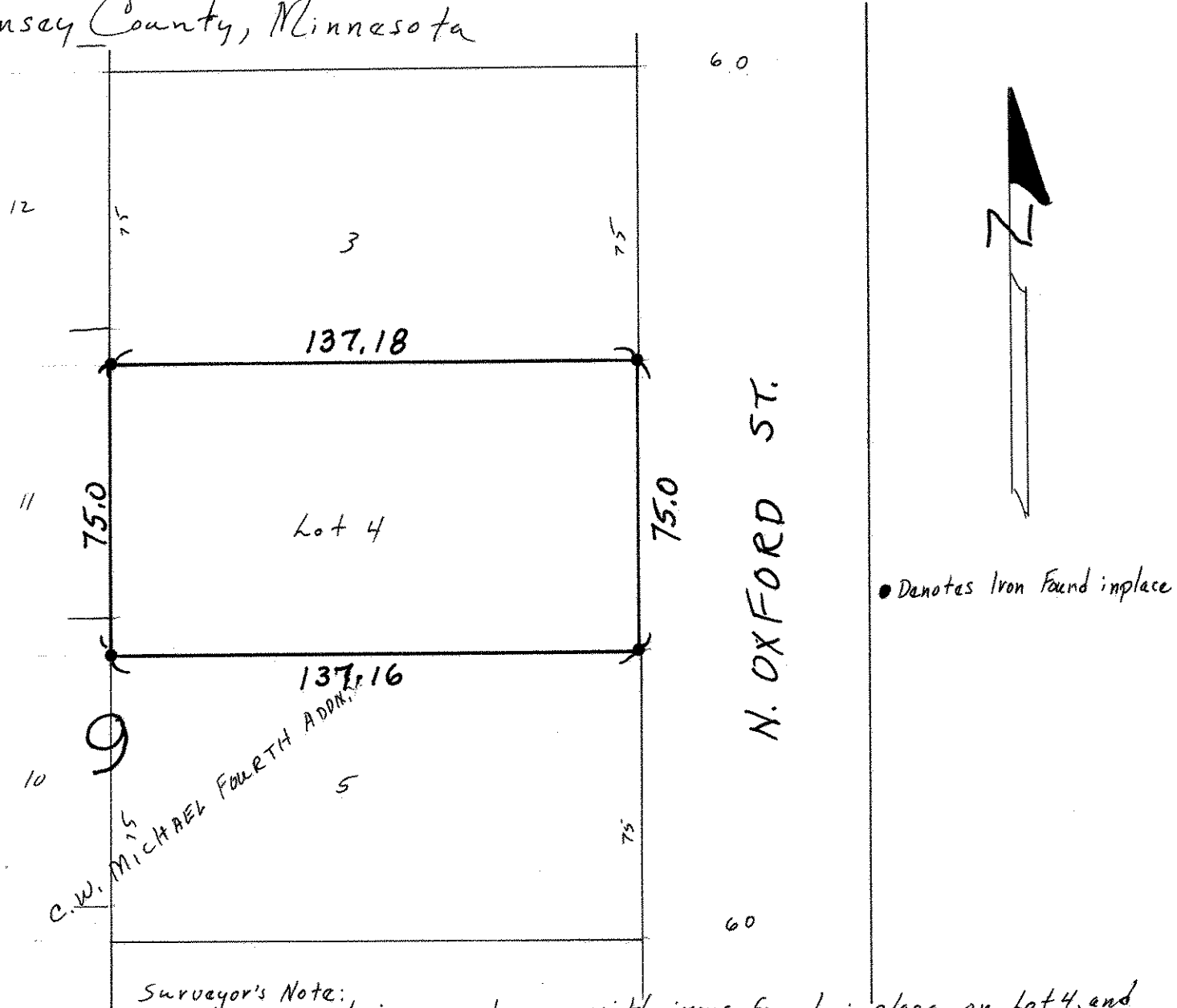
Scale 1" = 40'

By Arnold W. Schmidt  
REGISTERED LAND SURVEYOR

Description:

Lot 4, Block 9, C.W. Michael Fourth Addition

Ramsey County, Minnesota



Surveyor's Note:  
Lot surveyed in accordance with irons found in place on Lot 4, and adjoining lots.