

Certificate of Survey

From the office of
GEORGI-SCHMIDT & ASSOC. INC.
3092 No. Lexington Ave., Roseville, Mn. 55113
LAND SURVEYING
483-4408

I Hereby Certify that this plat shows a survey made by me of the property described on this plat, and that the corners are correctly placed as shown, and that all locations have been correctly shown.

Job Number: 1172

Surveyed For Ted Swendra

Date 6/18/82

Scale 1" = 40'

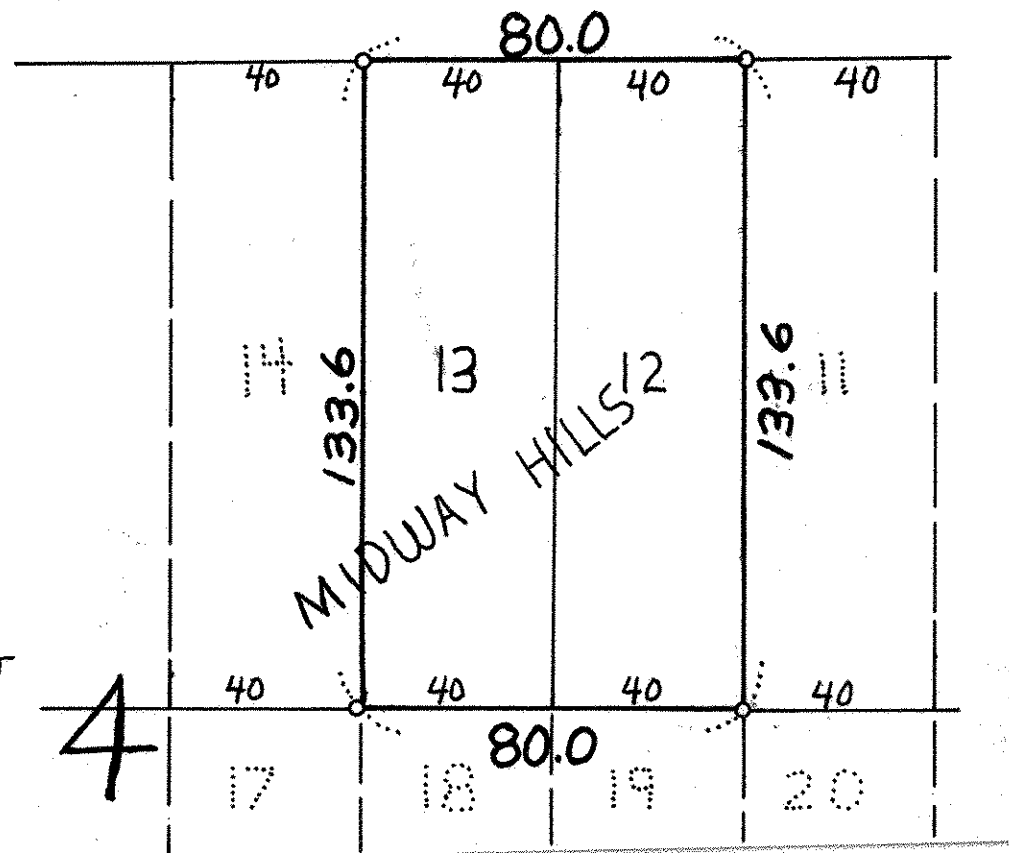
By Donald W. Schmidt
REGISTERED LAND SURVEYOR
#10459

Description:

Lots 12 and 13, Block 4, Midway Hills Rearrangement of Como Garden Lots.
Ramsey County, Minnesota



60 BURKE AVE. 60



o DENOTES IRON PIPE SET