

NW 162923

FROM THE OFFICE OF

CHARLES O. GEORGI COMPANY

2215 West County Road B

Saint Paul, Minnesota 55113

REGISTERED CIVIL ENGINEER AND LAND SURVEYOR

Certificate of Survey

I Hereby Certify that this plat shows a survey made by me of the property described on this plat, and that the corners are correctly placed as shown, and that all locations have been correctly shown.

Surveyed For E. J. TEMPEL

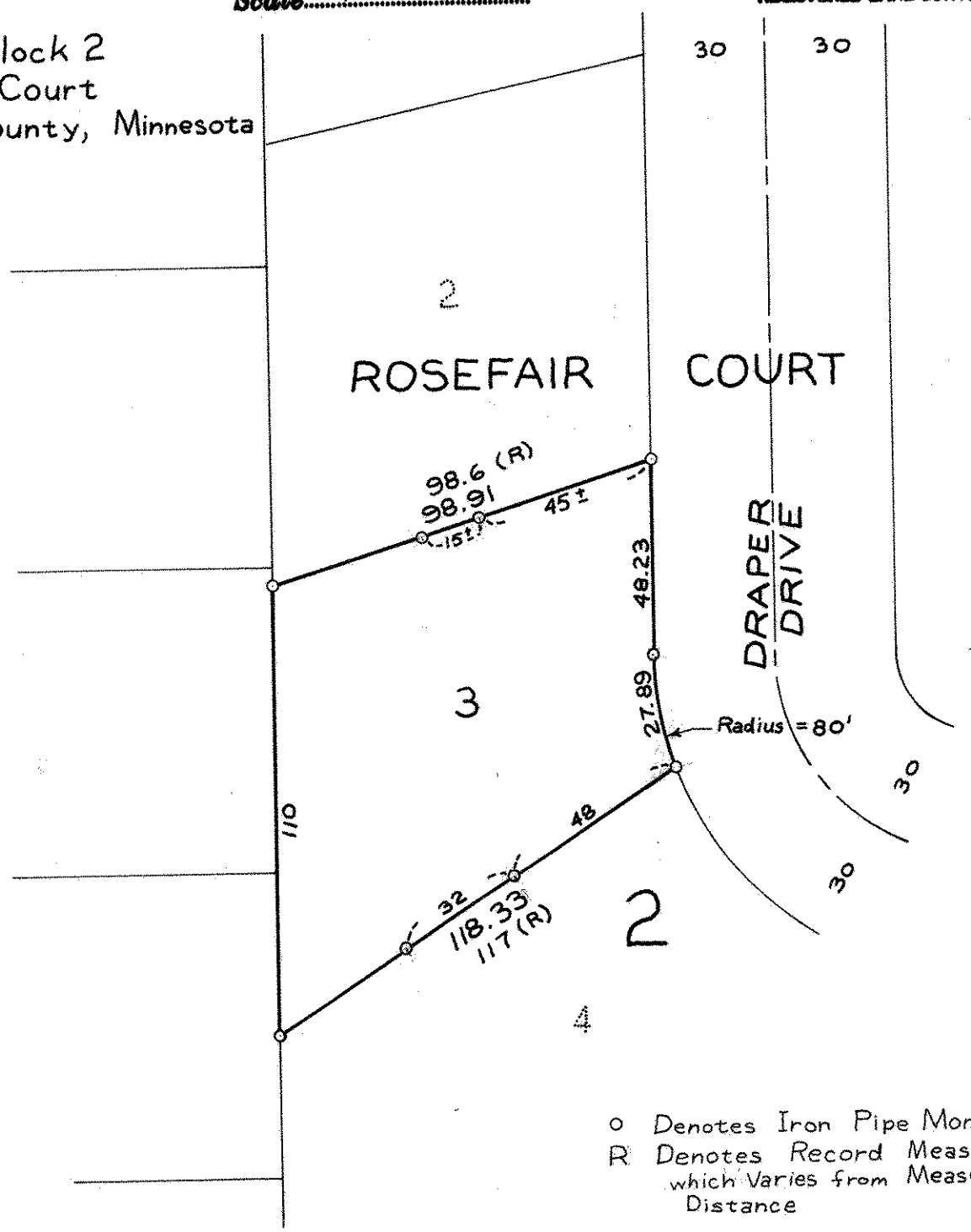
Date June 1976

Scale 1" = 40'

By Charles O. Georgi
REGISTERED LAND SURVEYOR

Description:

Lot 3, Block 2
Rosefair Court
Ramsey County, Minnesota



o Denotes Iron Pipe Monument
R Denotes Record Measurement
which Varies from Measured
Distance