

FROM THE OFFICE OF

CHARLES O. GEORGI COMPANY

2215 West County Road B

Saint Paul, Minnesota 55113

REGISTERED CIVIL ENGINEER AND LAND SURVEYOR

**Certificate
of Survey**

I Hereby Certify that this plat shows a survey made by me of the property described on this plat, and that the corners are correctly placed as shown, and that all locations have been correctly shown.

Surveyed For Terrence Thompson

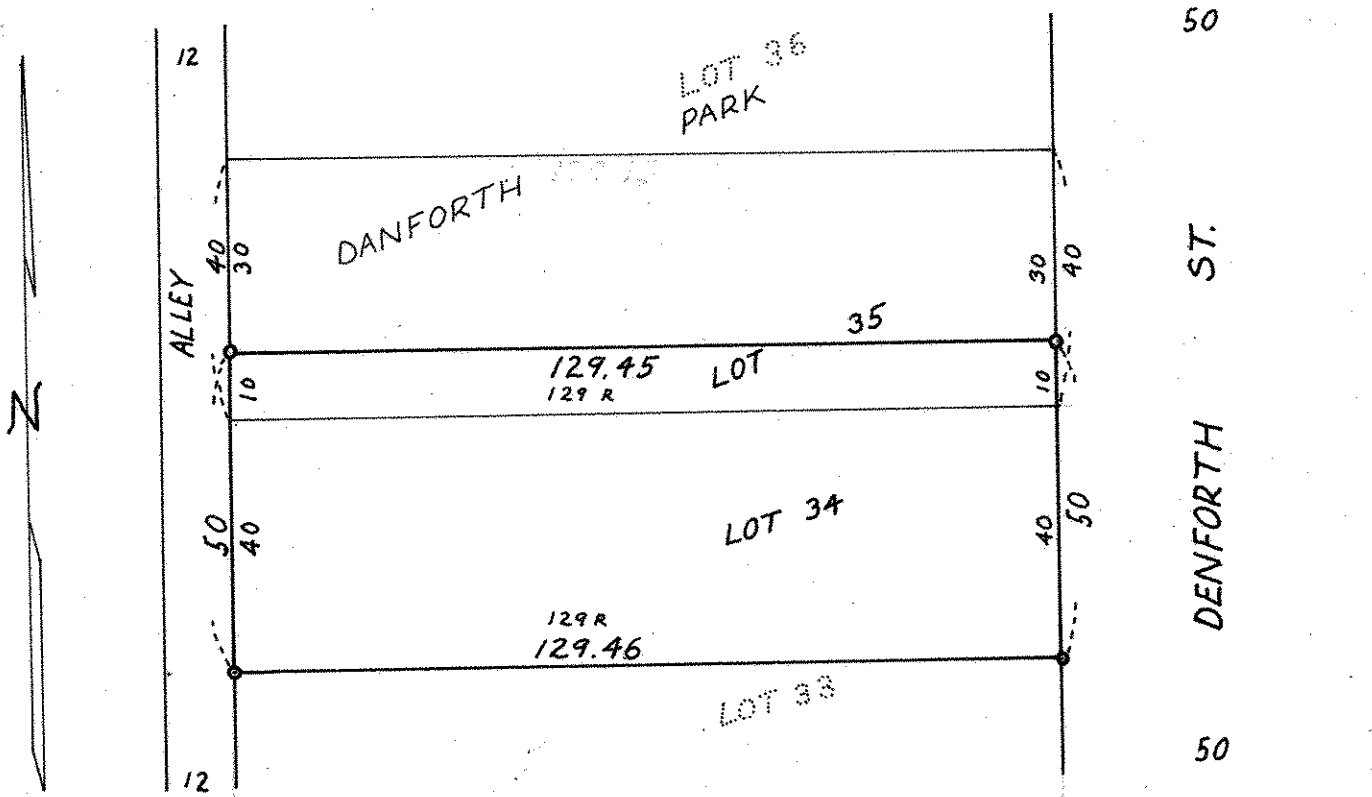
Date July, 1970

Scale 1" = 30'

By Charles O. Georgi
REGISTERED LAND SURVEYOR

Description:

Lot 34 and the South 10 feet of lot 35,
Danforth Park,
Saint Paul, Ramsey County, Minnesota.



⊙ Denotes Iron Monument
R Denotes Record Distance where it Varies from Measured Distance