

FROM THE OFFICE OF

# CHARLES O. GEORGI COMPANY

2215 West County Road B

Saint Paul, Minnesota 55113

REGISTERED CIVIL ENGINEER AND LAND SURVEYOR

## Certificate of Survey

I Hereby Certify that this plat shows a survey made by me of the property described on this plat, and that the corners are correctly placed as shown, and that all locations have been correctly shown.

File: Toltz

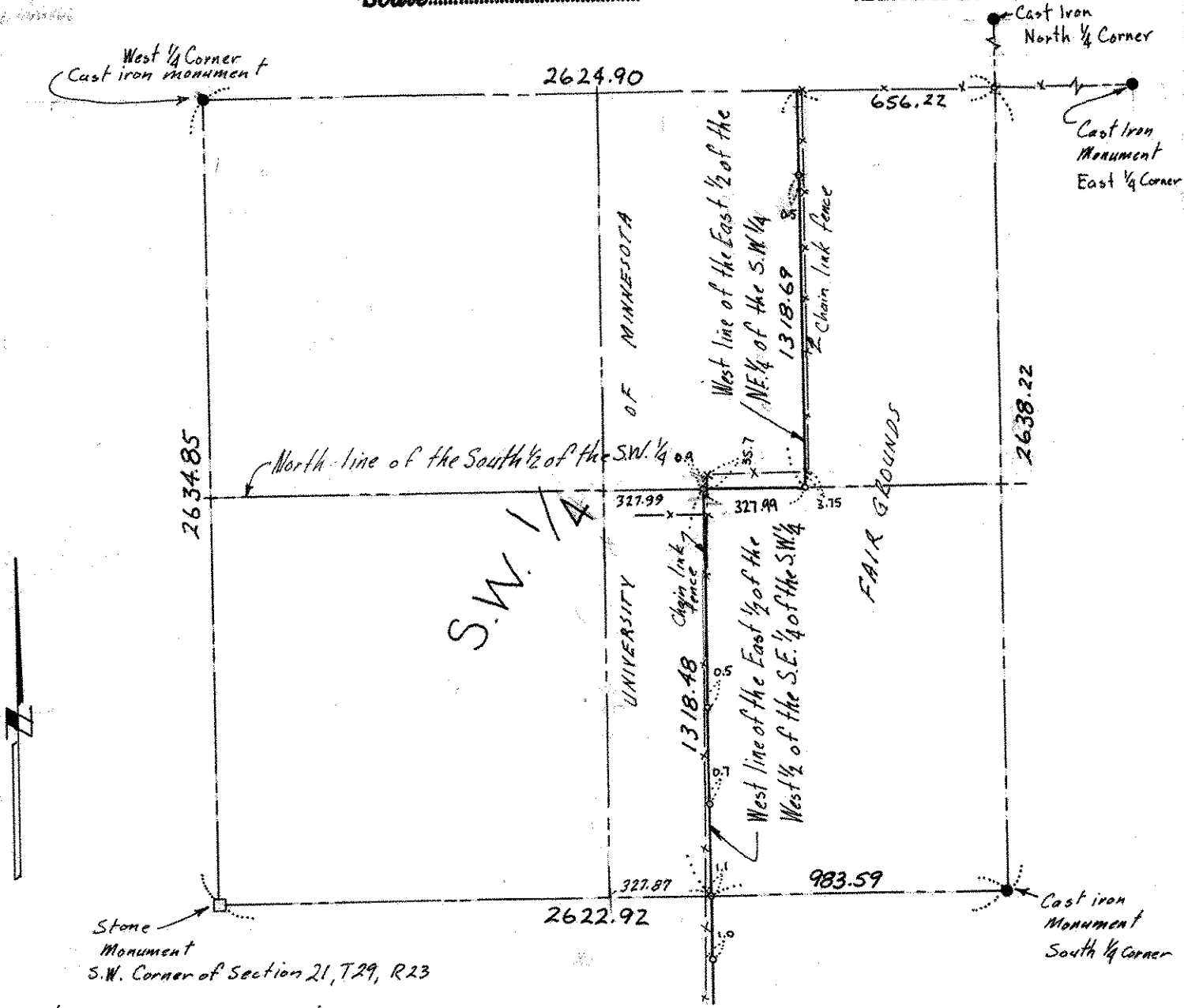
Surveyed For TKDA Toltz

Date April 1975

Scale 1"=500

By Charles O. Georgi  
REGISTERED LAND SURVEYOR

*See map*



o denotes iron pipe monument