

NE 17 2923

FROM THE OFFICE OF

# CHARLES O. GEORGI COMPANY

2215 West County Road B

Saint Paul, Minnesota 55113

REGISTERED CIVIL ENGINEER AND LAND SURVEYOR

## Certificate of Survey

I Hereby Certify that this plat shows a survey made by me of the property described on this plat, and that the corners are correctly placed as shown, and that all locations have been correctly shown.

Surveyed For *Rose Hill Alliance Church*

Date *October 1967*

Scale *1" = 100'*

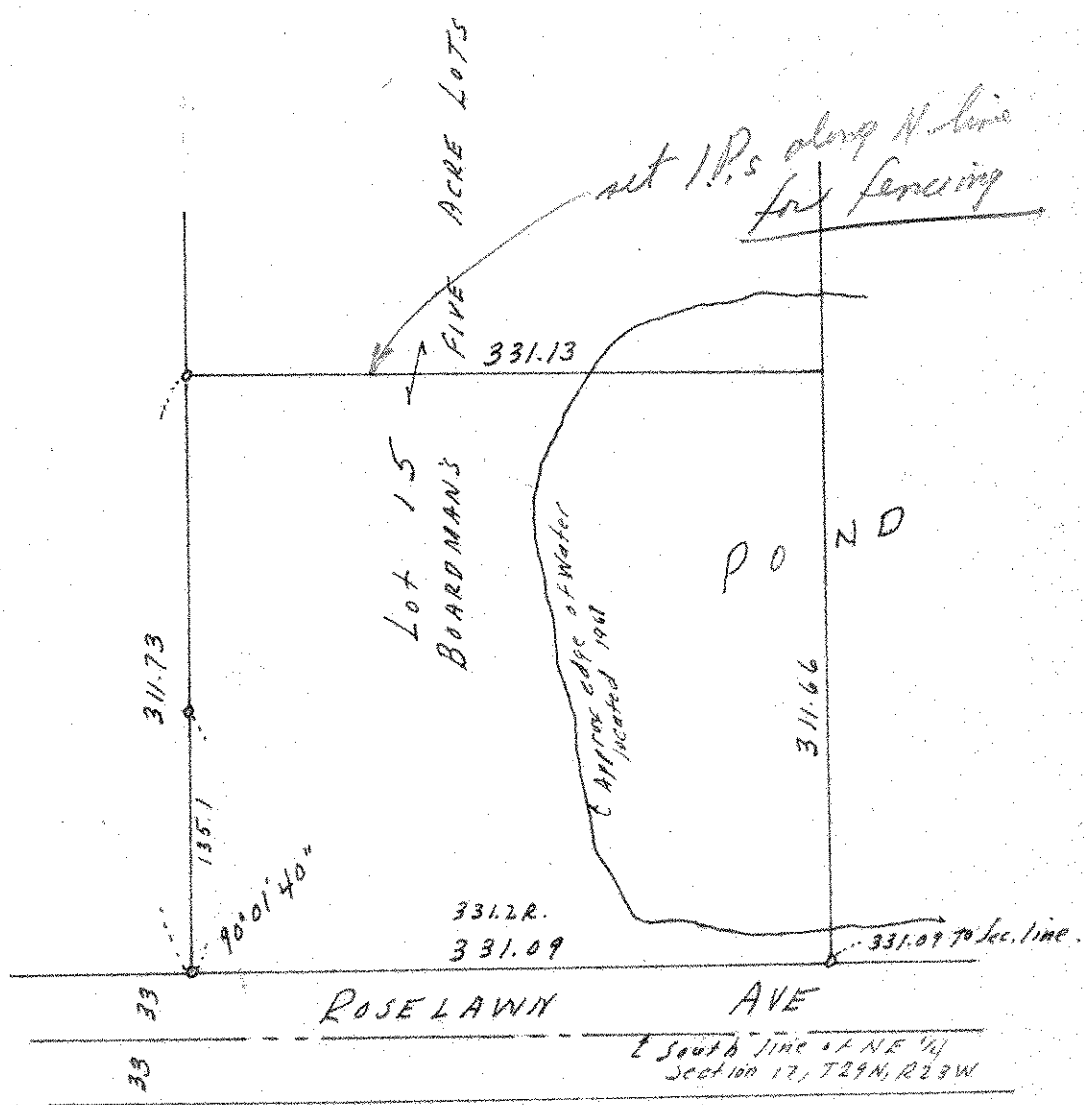
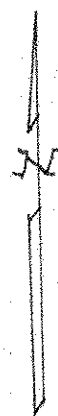
By *Charles O. Georgi*  
REGISTERED LAND SURVEYOR

**Description:**

*The South 1/2 of Lot 15  
Boardman's Five Acre Lots  
Ramsey County, Minn.*

*o* Denotes Iron Monument.

*R* - Record distance per plat.



*South line of NE 1/4  
Section 17, T29N, R29W*