

NE 2 29 23

FROM THE OFFICE OF

CHARLES O. GEORGI COMPANY

2215 West County Road B

Saint Paul 13, Minnesota

REGISTERED CIVIL ENGINEER AND LAND SURVEYOR



I Hereby Certify that this plat shows a survey made by me of the property described on this plat, and that the corners are correctly placed as shown, and that all locations have been correctly shown.

Surveyed For George Childs

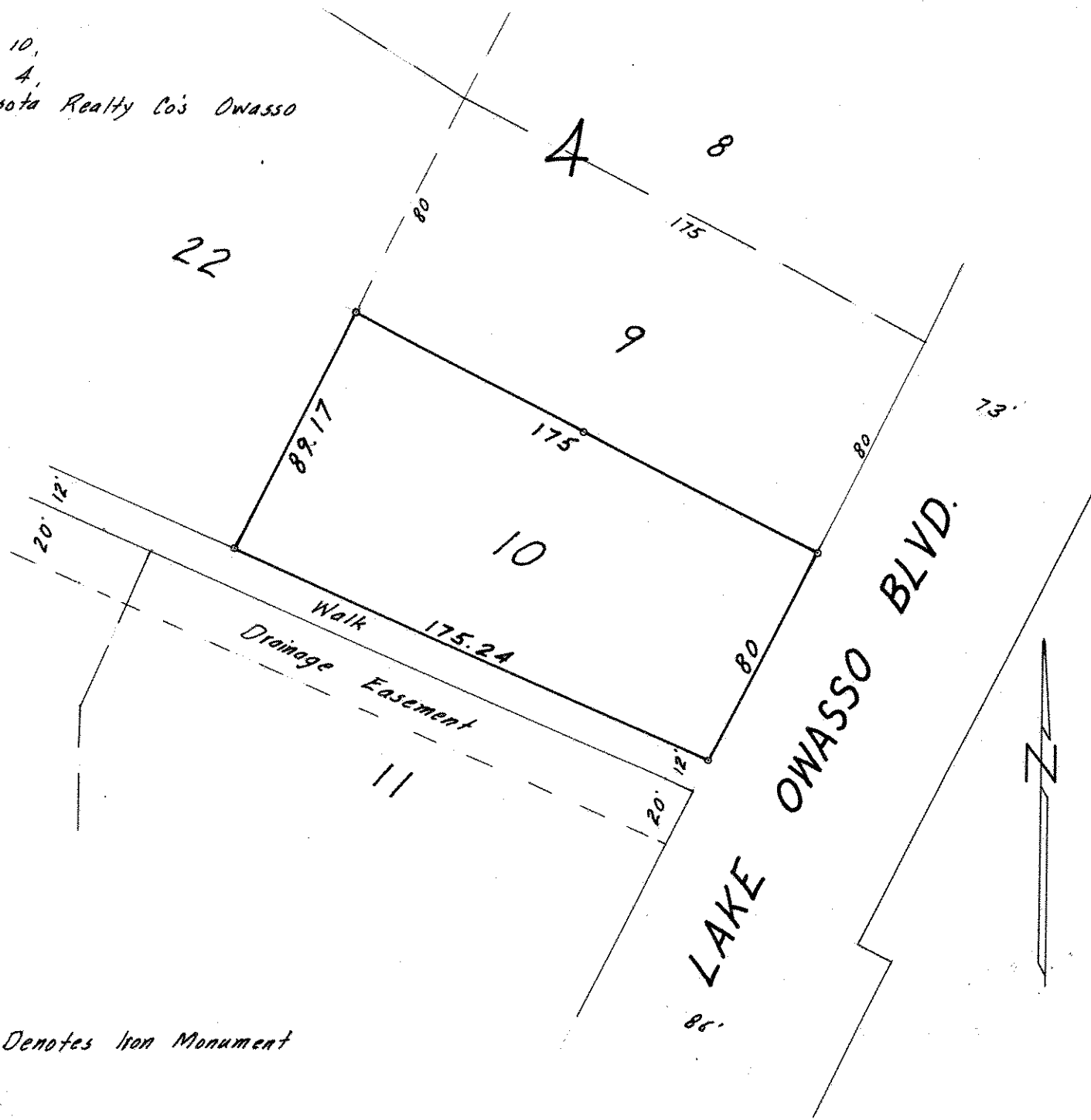
Date Dec. 1964

Scale 1" = 50'

By Charles O. Georgi
REGISTERED LAND SURVEYOR

Description:

Lot 10,
Block 4,
Minnesota Realty Co's Owasso



° Denotes Iron Monument