

FROM THE OFFICE OF

# CHARLES O. GEORGI COMPANY

2215 West County Road B

Saint Paul, Minnesota 55113

REGISTERED CIVIL ENGINEER AND LAND SURVEYOR

## Certificate of Survey

*I Hereby Certify that this plat shows a survey made by me of the property described on this plat, and that the corners are correctly placed as shown, and that all locations have been correctly shown.*

Project No. Minn. A-1-1  
Parcels 24-20 + 24-21  
Area = 4661 Sq Ft .107 Acre

Surveyed For Housing Authority

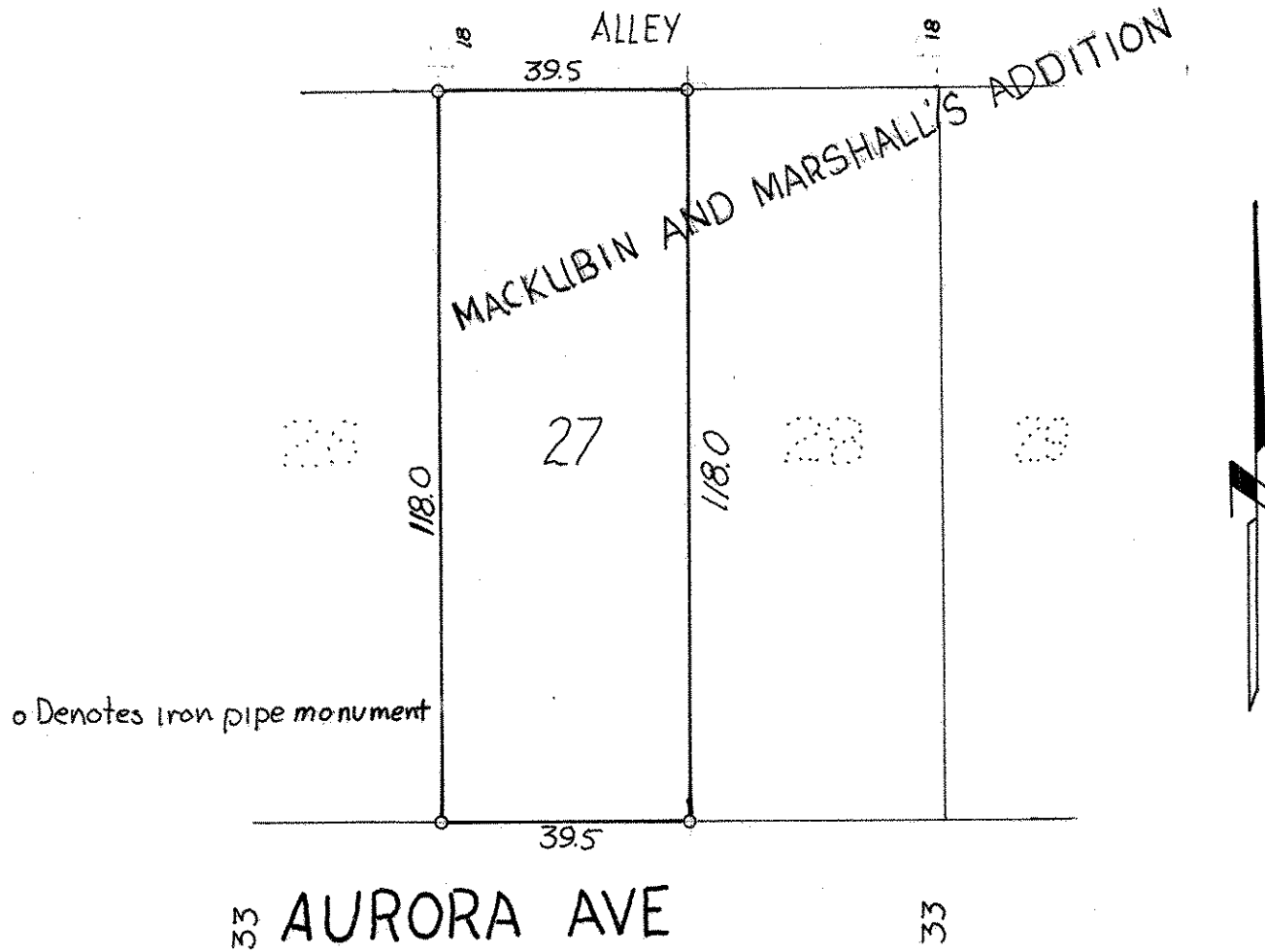
Date January 1973

Scale 1"=30'

By Charles O. Georgi  
REGISTERED LAND SURVEYOR

**Description:**

Lot 27, Block 1, Mackubin and Marshall's  
Addition, Ramsey County, Minnesota.



o Denotes iron pipe monument