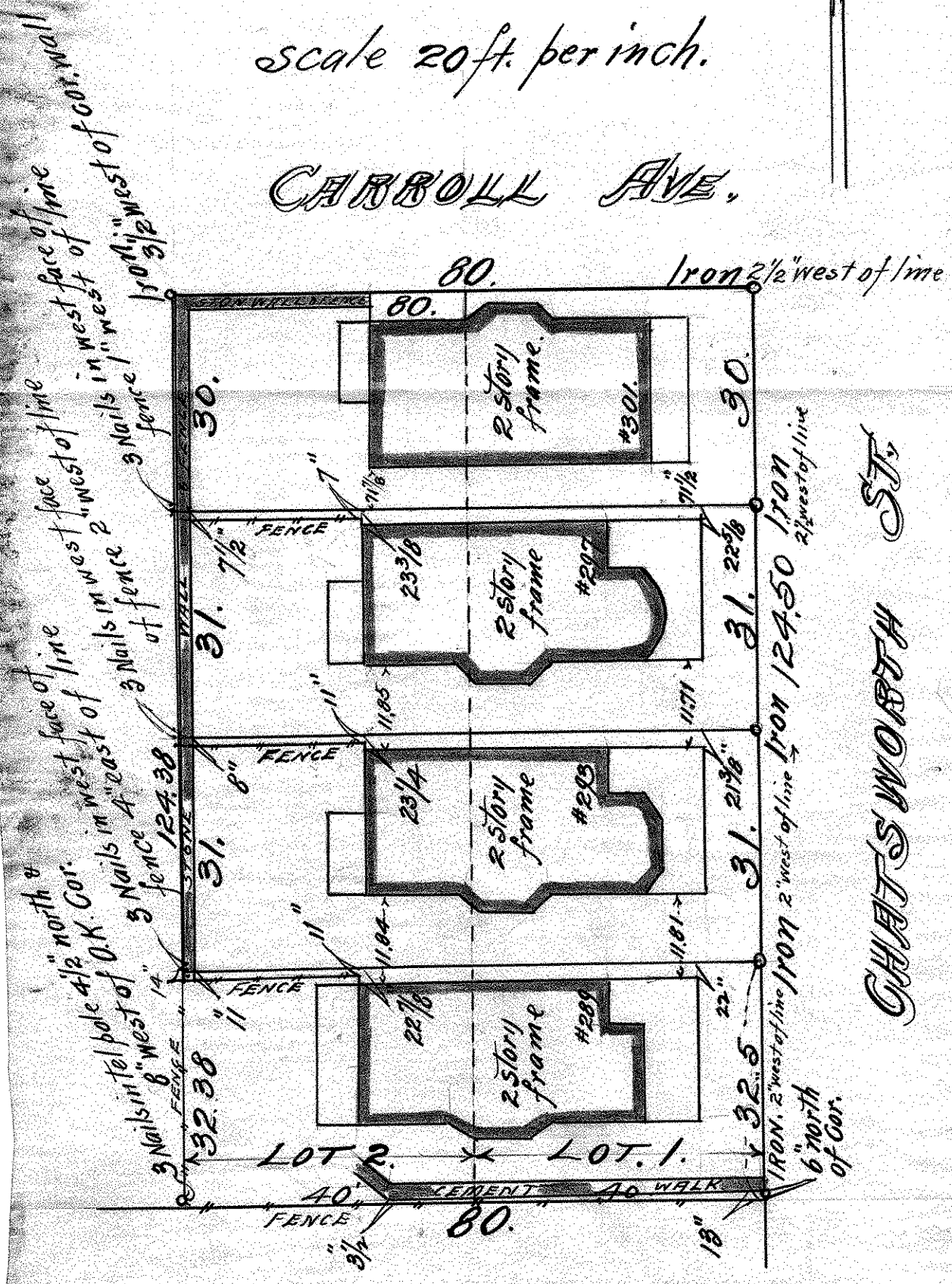


LOTS 1 & 2 BLOCK 4  
 G.V. BACON'S SUBN.  
 BUELL & MACKUBIN O.L.

JOHN B. IRVINE, SURVEYOR.  
 408 GLOBE BLDG.  
 ST. PAUL, MINN.  
 APRIL 9<sup>th</sup> 1914.

scale 20 ft. per inch.

CARROLL AVE.



CHATTEMORTH ST.