

# LYMAN D. BAIRD'S

## ADDITION.

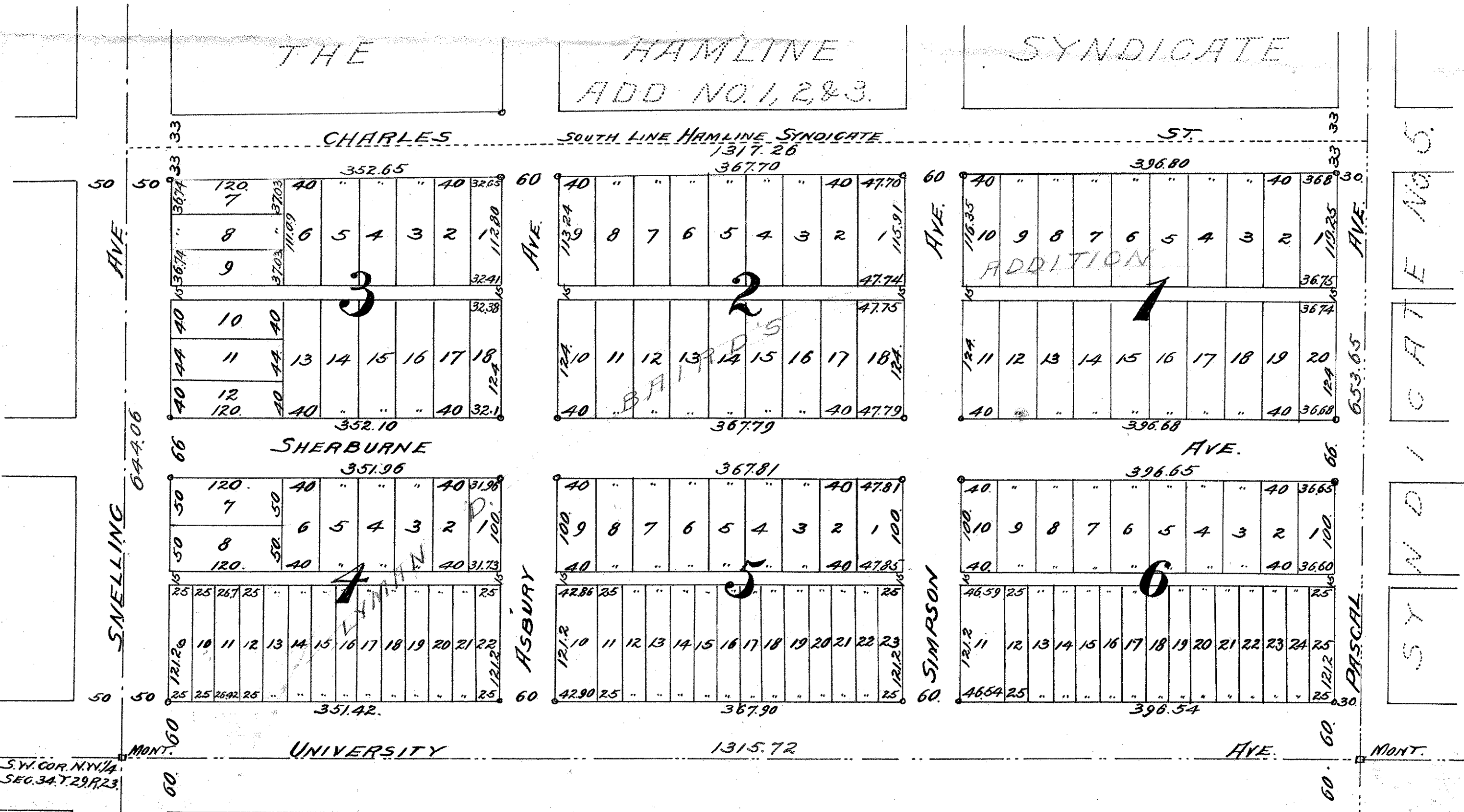
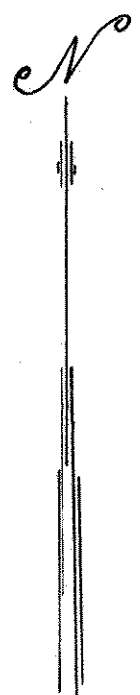
ST PAUL, RAMSEY CO. MINN.

JOHN B. IRVINE, SURVEYOR.

JUNE 1906.

SCALE 100 FT. PER. INCH.

o INDICATES IRONS



S.V. COR. N.Y. 1/4 SEC. 34 T. 29 R. 23