

FROM THE OFFICE OF

**CHARLES O. GEORGI COMPANY**

2215 West County Road B

Saint Paul, Minnesota 55113

REGISTERED CIVIL ENGINEER AND LAND SURVEYOR



*I Hereby Certify that this plat shows a survey made by me of the property described on this plat, and that the corners are correctly placed as shown, and that all locations have been correctly shown.*

Surveyed For *Loraine Bens*

Date *May 1975*

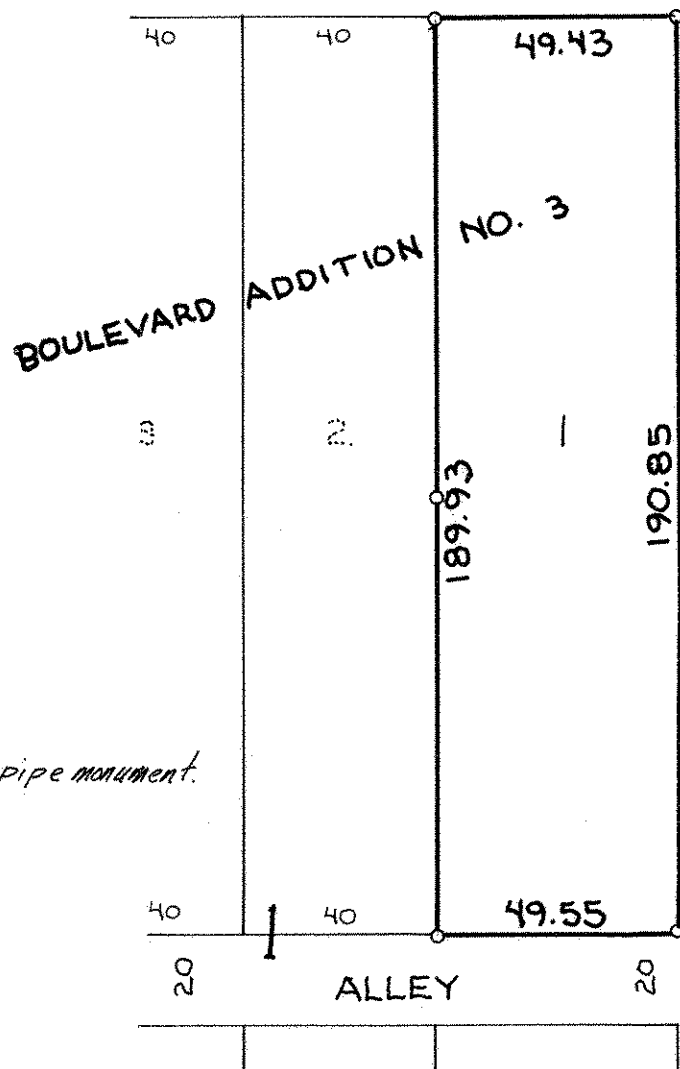
Scale *1"=40'*

By *Charles O. Georgi*  
REGISTERED LAND SURVEYOR

**Description:**

Lot 1,  
Block 1,  
Boulevard Addition No. 3  
Ramsey County,  
Minnesota

PORTLAND AVENUE



*o denotes iron pipe monument.*