

Certificate of Survey

From the office of GEORGI-SCHMIDT & ASSOC. INC. 3092 No. Lexington Ave., Roseville, Mn. 55113 LAND SURVEYING 483-4408

I Hereby Certify that this plat shows a survey made by me of the property described on this plat, and that the corners are correctly placed as shown.

Job Number: 1227

Surveyed For Belair Builders Inc.

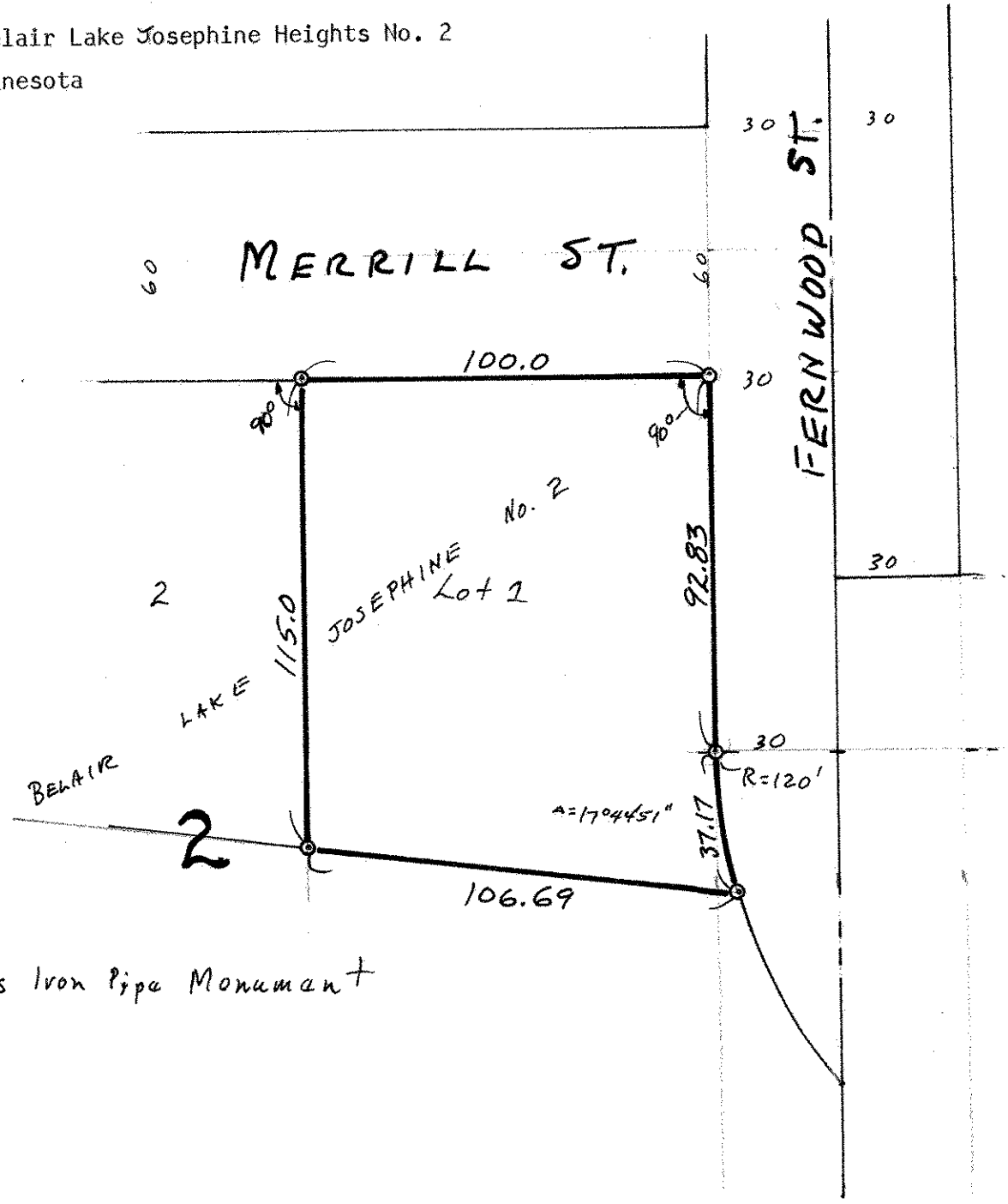
Date 8/11/82

Scale 1" = 40

By Donald W. Schmidt REGISTERED LAND SURVEYOR #10459

Description:

Lot 1, Block 2, Belair Lake Josephine Heights No. 2 Ramsey County, Minnesota



o Denotes Iron Pipe Monument