

Certificate of Survey

From the office of GEORGI-SCHMIDT & ASSOC. INC. 3092 No. Lexington Ave., Roseville, Mn. 55113 LAND SURVEYING 483-4408

I Hereby Certify that this plat shows a survey made by me of the property described on this plat, and that the corners are correctly placed as shown.

Job Number: 1616

Surveyed For Belair Builders Inc.

Date 6/15/84

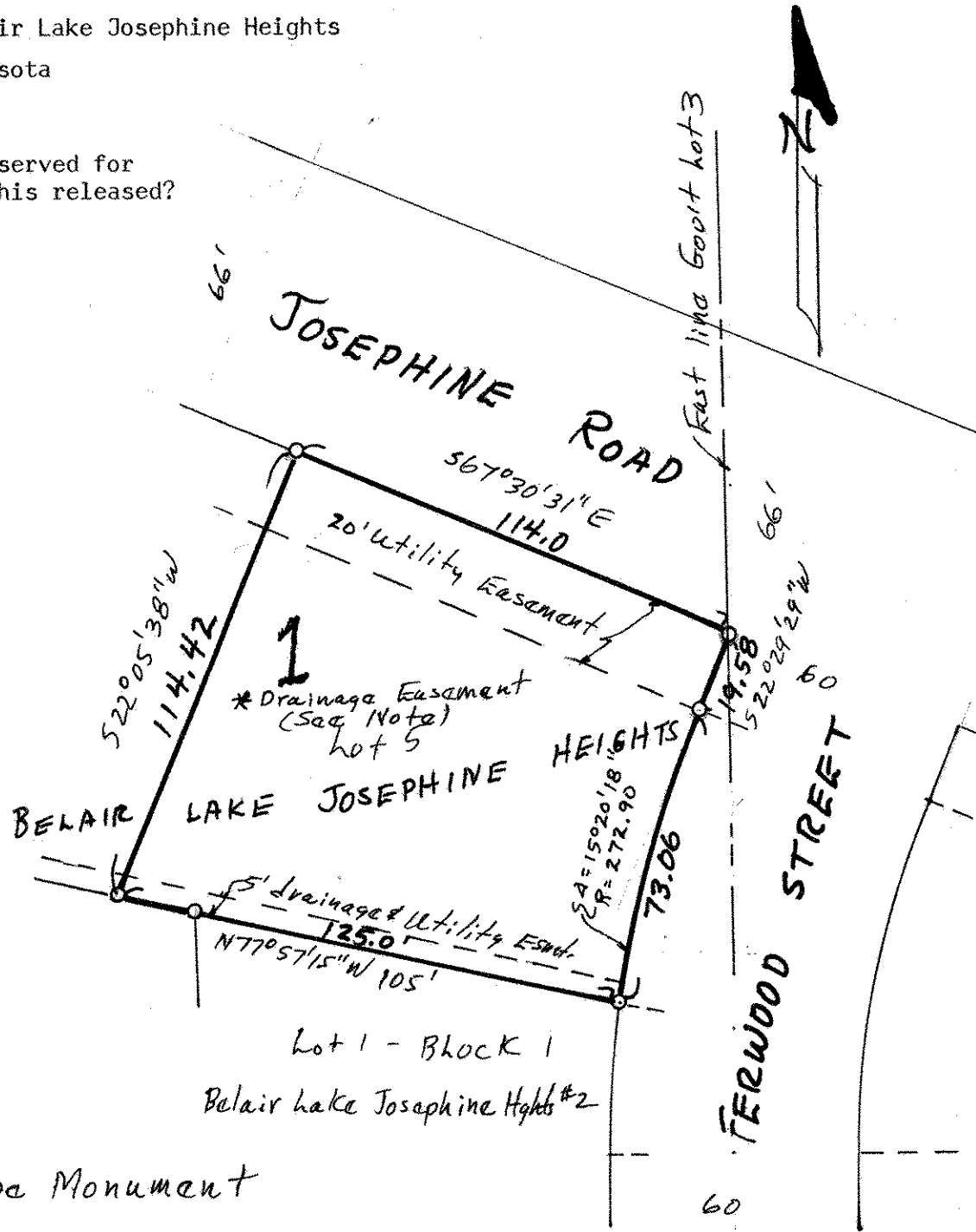
Scale 1" = 40'

By REGISTERED LAND SURVEYOR

Description:

Lot 5, Block 1, Belair Lake Josephine Heights Ramsey County, Minnesota

* Plat indicates Lot 5 reserved for drainage easement - was this released?



o Denotes Iron Pipe Monument