

Certificate of Survey

From the office of
GEORGI-SCHMIDT & ASSOC. INC.
 3092 No. Lexington Ave., Roseville, Mn. 55113
 LAND SURVEYING
 483-4408

I Hereby Certify that this plat shows a survey made by me of the property described on this plat, and that the corners are correctly placed as shown, and that all locations have been correctly shown.

Job Number: 737

Surveyed For Bernhart Construction Inc.

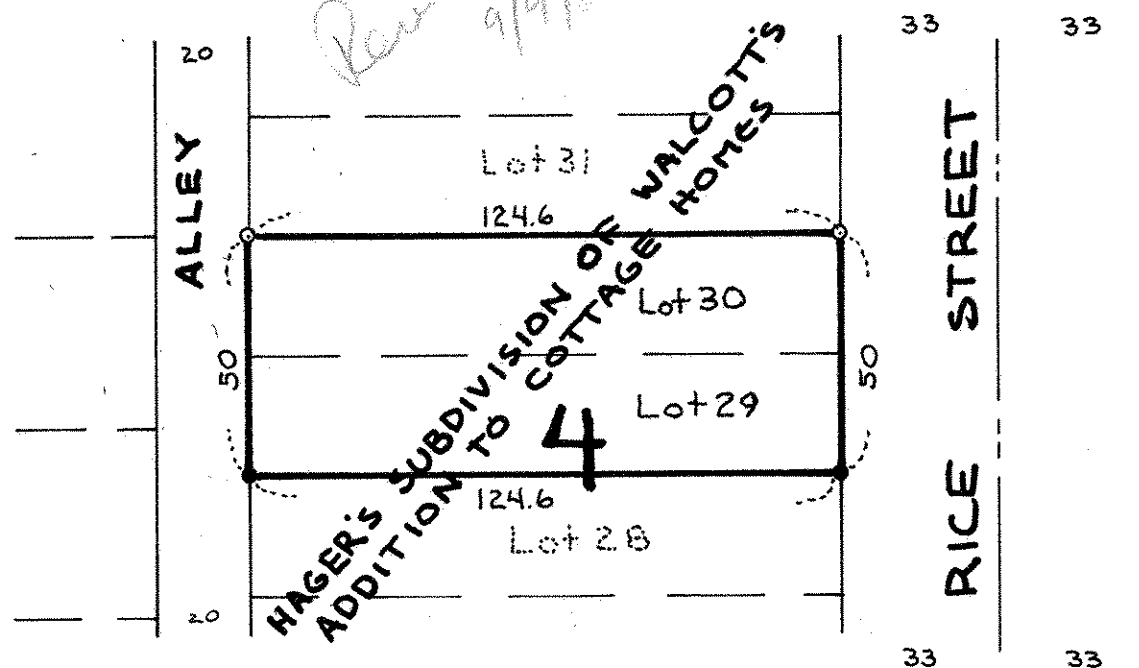
Date September 8, 1980

Scale 1"=40'

By Arnold W. Schmidt
 REGISTERED LAND SURVEYOR

Description:

Lots 29 and 30,
 Block 4,
 Hager's Subdivision of Walcott's
 Addition to Cottage Homes,
 Ramsey County, Minnesota.



- Denotes Iron Monument found in place
- Denotes Iron pipe Monument set