

FROM THE OFFICE OF

CHARLES O. GEORGI COMPANY

2215 West County Road B

Saint Paul, Minnesota 55113

REGISTERED CIVIL ENGINEER AND LAND SURVEYOR

Certificate of Survey

I Hereby Certify that this plat shows a survey made by me of the property described on this plat, and that the corners are correctly placed as shown, and that all locations have been correctly shown.

Surveyed For *Elizabeth Close - Architect*

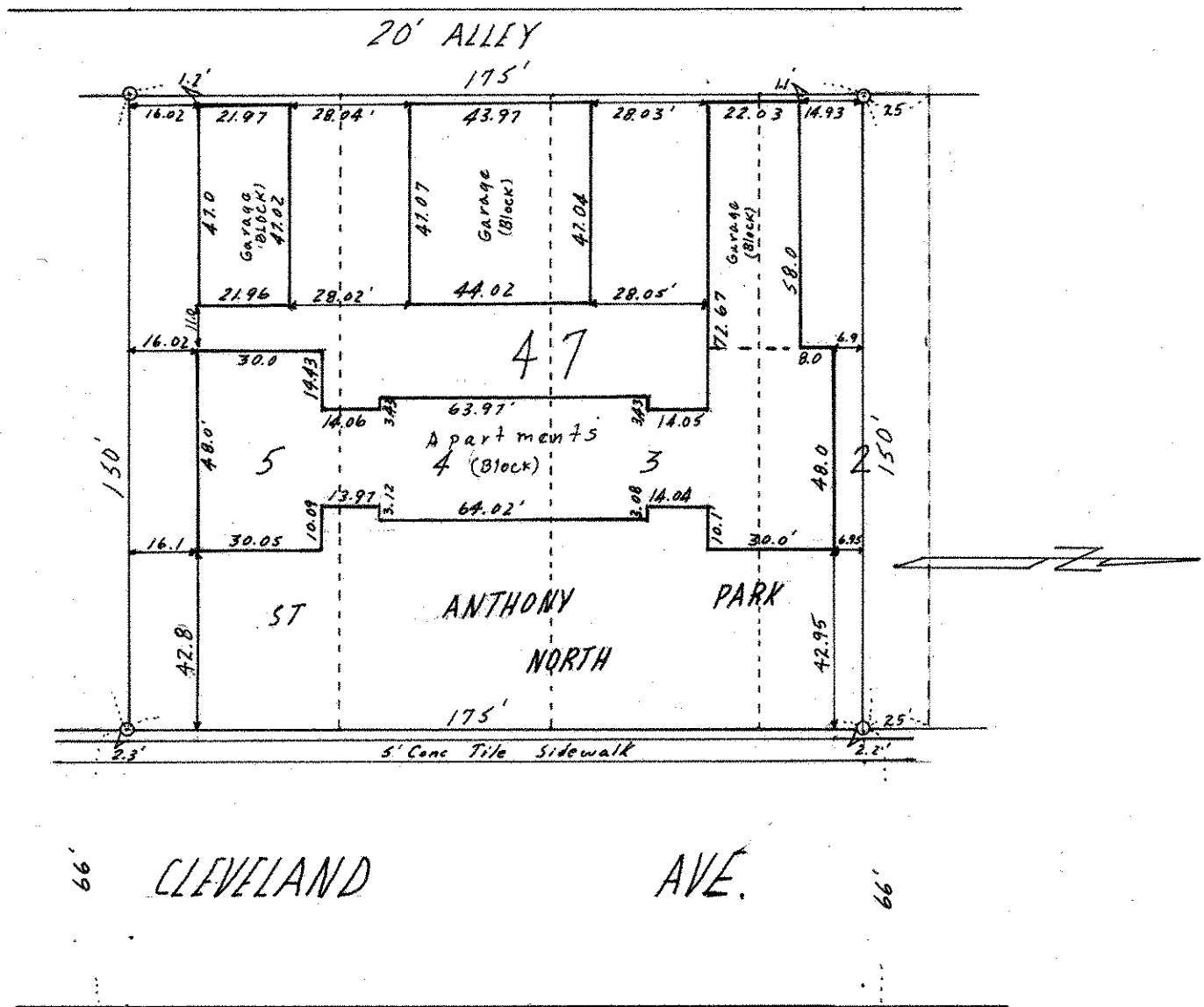
Date *April 1970*

Scale *1" = 40'*

By *Charles O. Georgi*
REGISTERED LAND SURVEYOR

Description:

*The South 1/2 of lot 2, and all of lots 3, 4 and 5
Block 47, St Anthony Park North,
St Paul, Ramsey County, Minn*



○ Denotes Iron Monument