

FROM THE OFFICE OF

CHARLES O. GEORGI COMPANY

2215 West County Road B

Saint Paul, Minnesota 55113

REGISTERED CIVIL ENGINEER AND LAND SURVEYOR

**Certificate
of Survey**

I Hereby Certify that this plat shows a survey made by me of the property described on this plat, and that the corners are correctly placed as shown, and that all locations have been correctly shown. *No corners placed to date.*

Surveyed For *George Reiling*

Date *March 1978*

Scale *1" = 60'*

By *Charles O. Georgi*
REGISTERED LAND SURVEYOR

Description:

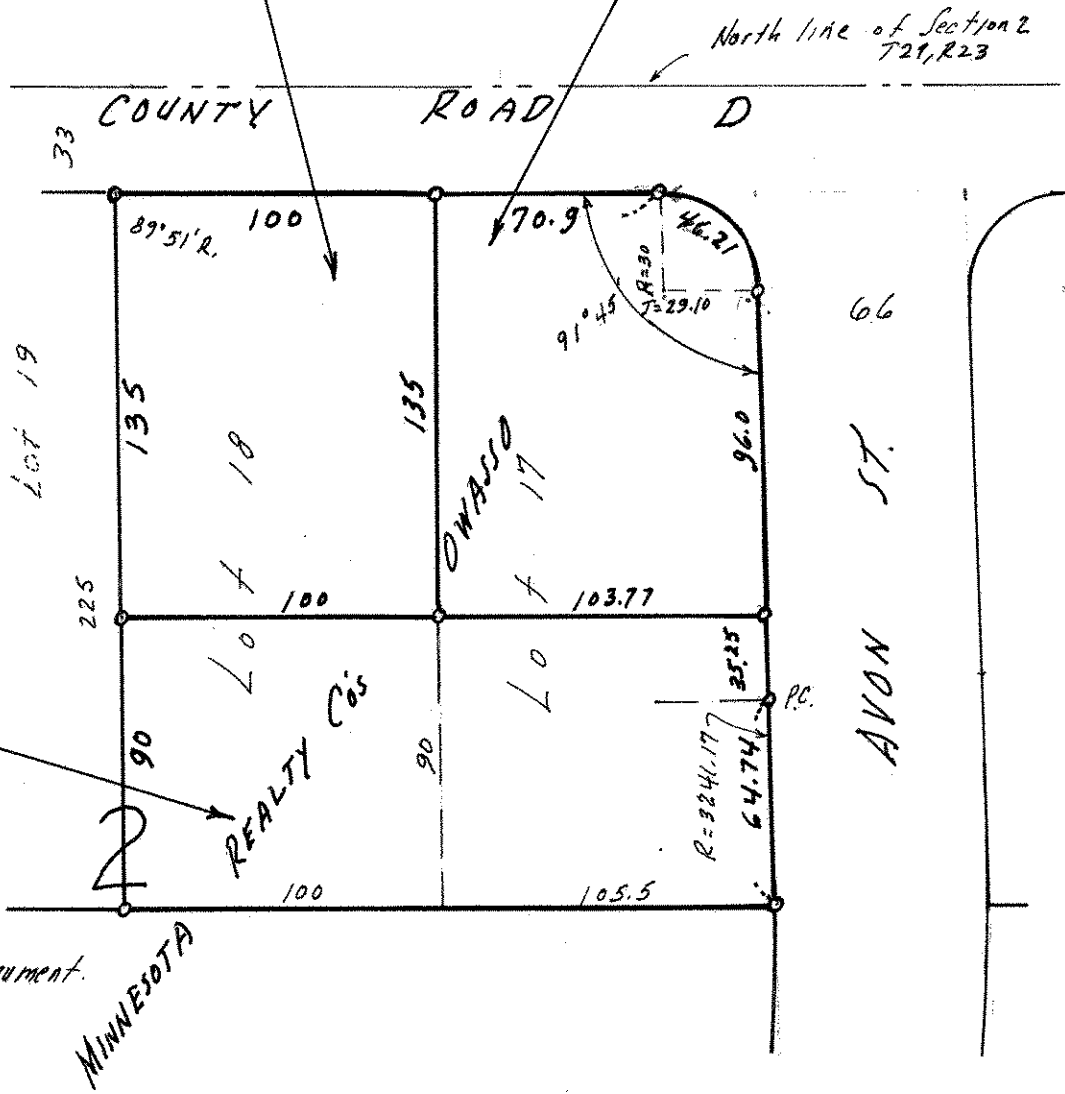
*Lot 18, Block 2, Minnesota Realty Co's. Owasso
except the South 90 feet thereof.
Ramsey County, Minn*

Description:

*Lot 17, Block 2, Minnesota Realty Co's. Owasso
except the South 90 feet thereof.
Ramsey County, Minn.*

Description:

*The South 90 feet of
Lots 17 and 18, Block 2,
Minnesota Realty Co's. Owasso.
Ramsey County, Minn.*



o Denotes Iron Pipe Monument.