

NE 3 29 23

# Certificate of Survey

From the office of  
**GEORGI-SCHMIDT & ASSOC. INC.**  
3092 No. Lexington Ave., Roseville, Mn. 55113  
LAND SURVEYING  
483-4408

I Hereby Certify that this plat shows a survey made by me of the property described on this plat and that the corners are correctly placed as shown

Job Number: 1616

Surveyed For Belair Builders Inc.

Date 6/15/84

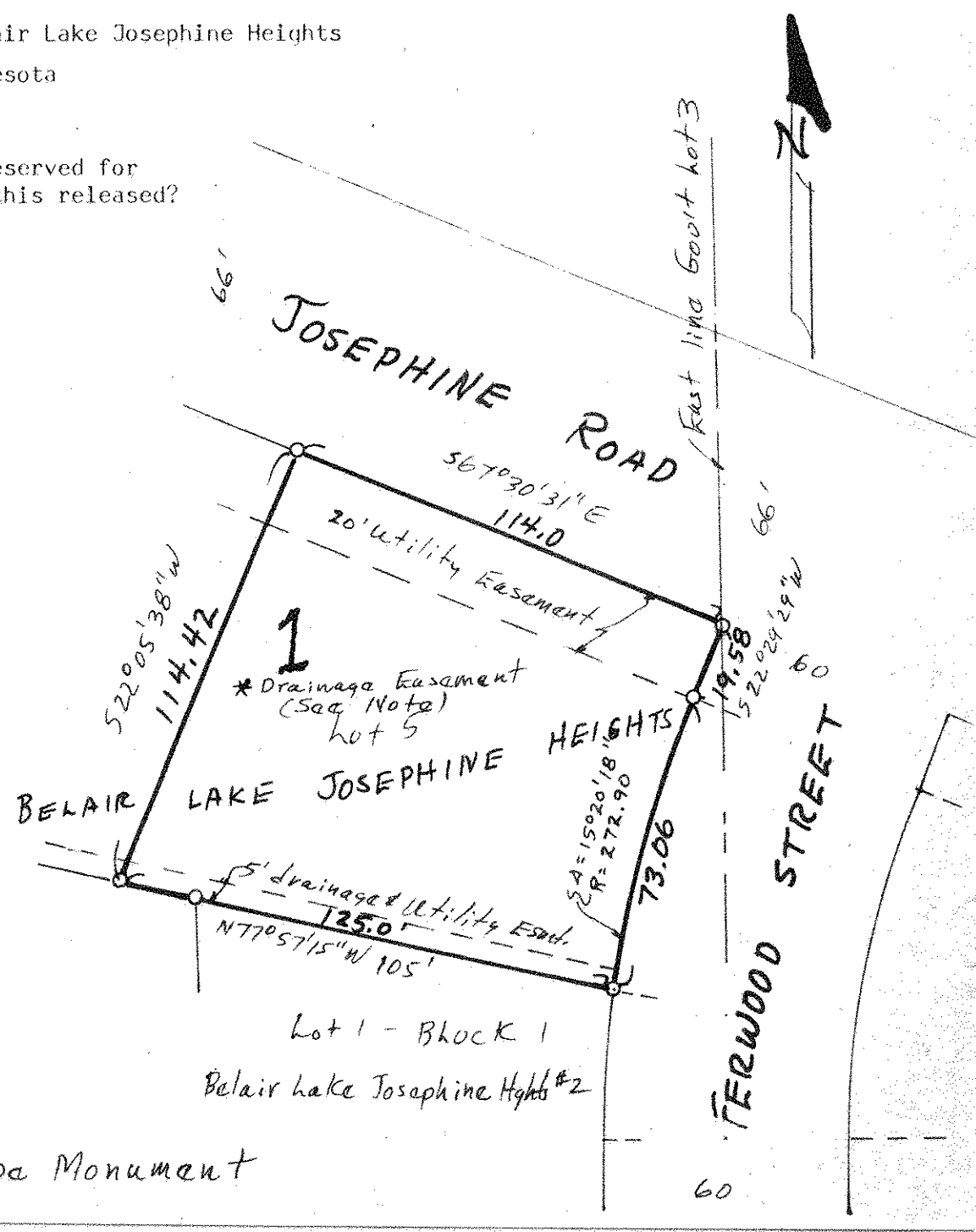
Scale 1" = 40'

By \_\_\_\_\_  
REGISTERED LAND SURVEYOR

### Description:

Lot 5, Block 1, Belair Lake Josephine Heights  
Ramsey County, Minnesota

\* Plat indicates Lot 5 reserved for drainage easement - was this released?



O Denotes Iron Pipe Monument