

NE 3 29 23

Certificate
of Survey

From the office of
GEORGI-SCHMIDT & ASSOC. INC.
3092 No. Lexington Ave., Roseville, Mn. 55113
LAND SURVEYING
483-4408

I Hereby Certify that this plat shows a survey made by me of the property described on this plat, and that the corners are correctly placed as shown.

Job Number: 1348

Surveyed For Belair Builders Inc.

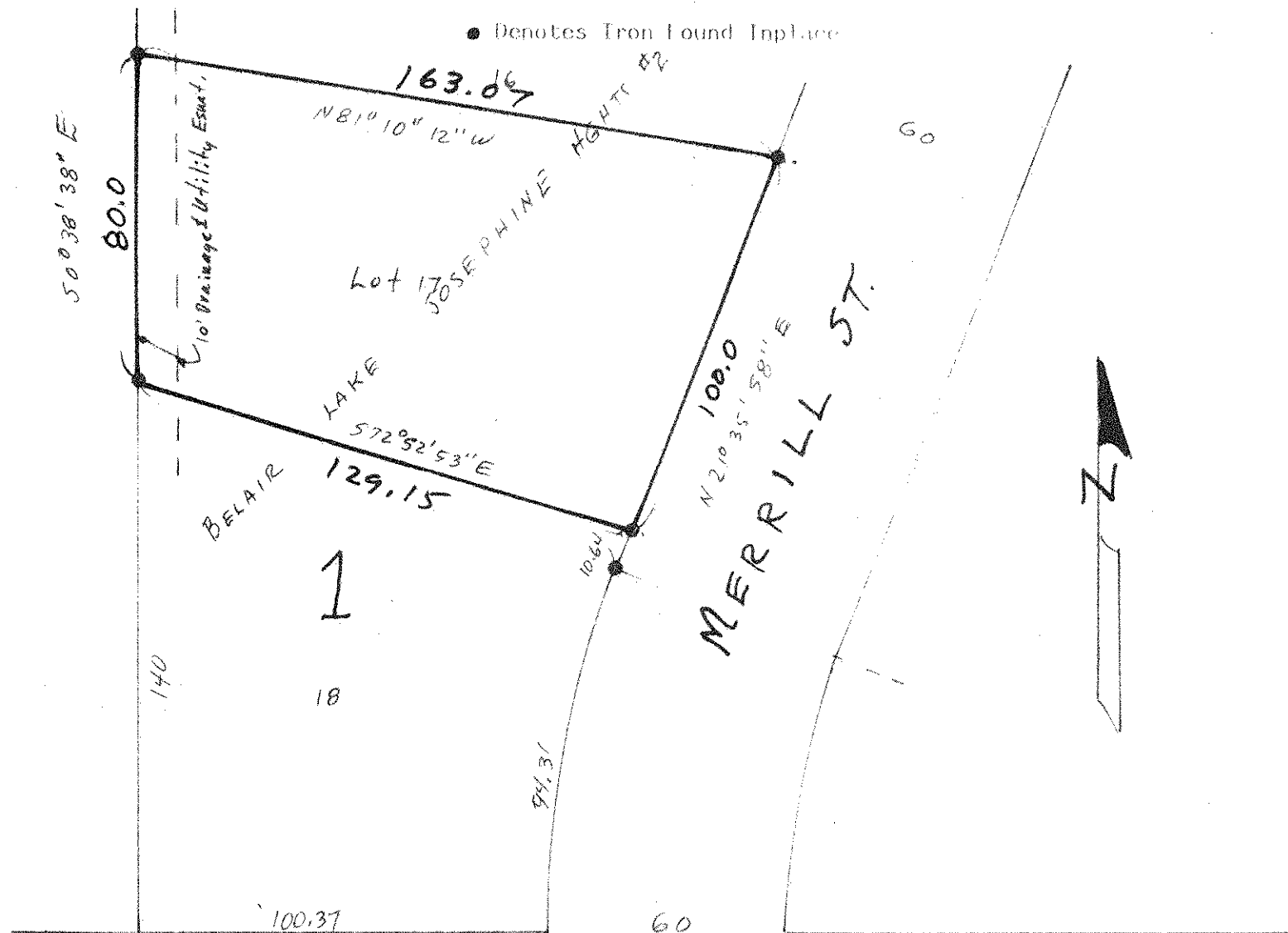
Date 3/30/83

Scale 1" = 40'

By Donald W. Schmidt
REGISTERED LAND SURVEYOR
#10459

Description:

Lot 17, Block 1, Belair Lake Josephine Heights No. 2
Ramsey County, Minnesota



COUNTY ROAD C²