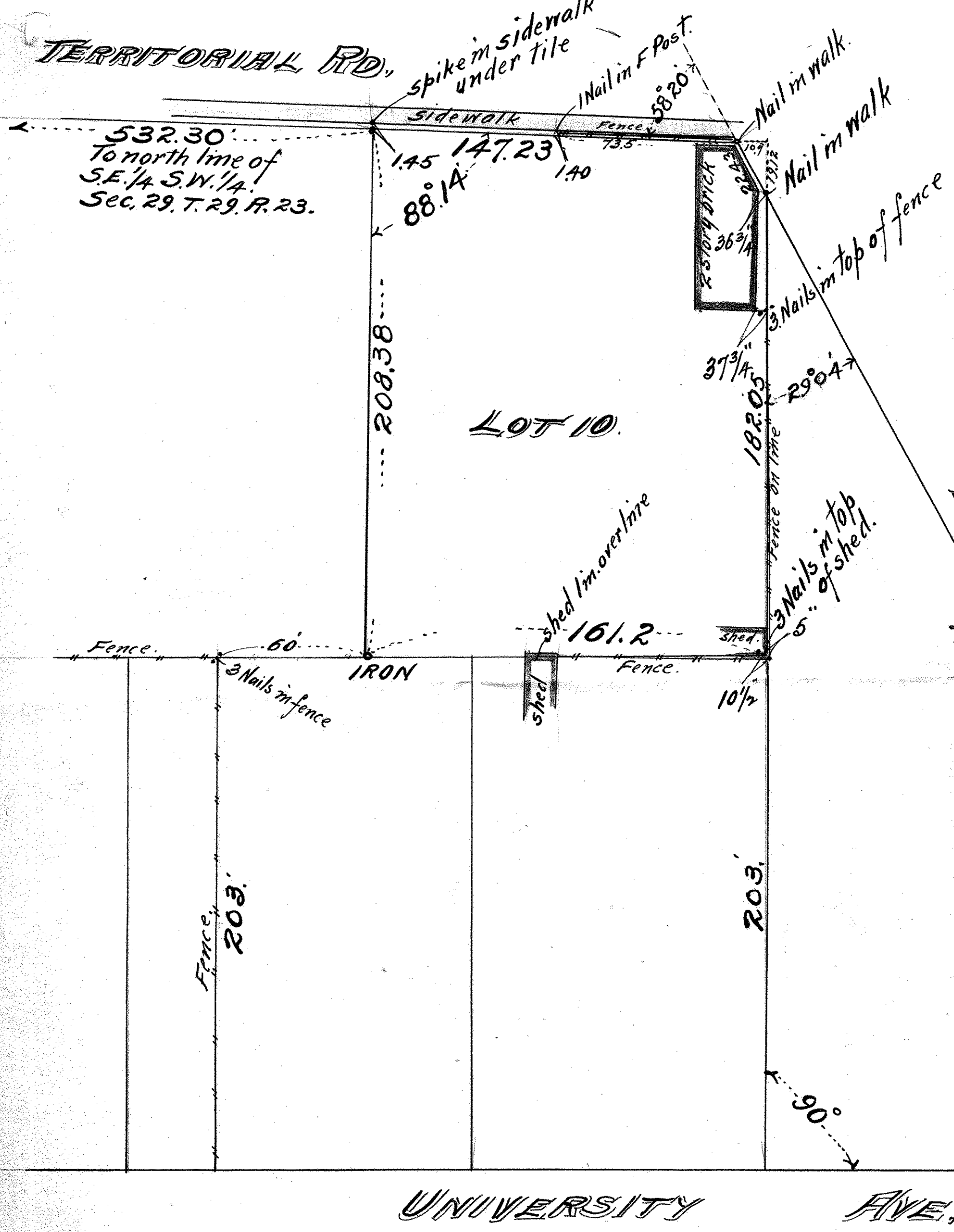


TERRITORIAL RD.

LOT 10.
AUDITOR'S
SUB'N.
NO. 4.

JOHN B. IRVINE, SURVEYOR.
408 GLOBE BLDG.
ST. PAUL, MINN.
MARCH 19-1910.
SCALE 40 ft. per inch.



LOT 10.

RAYMOND AVE.
440.67'

UNIVERSITY AVE.