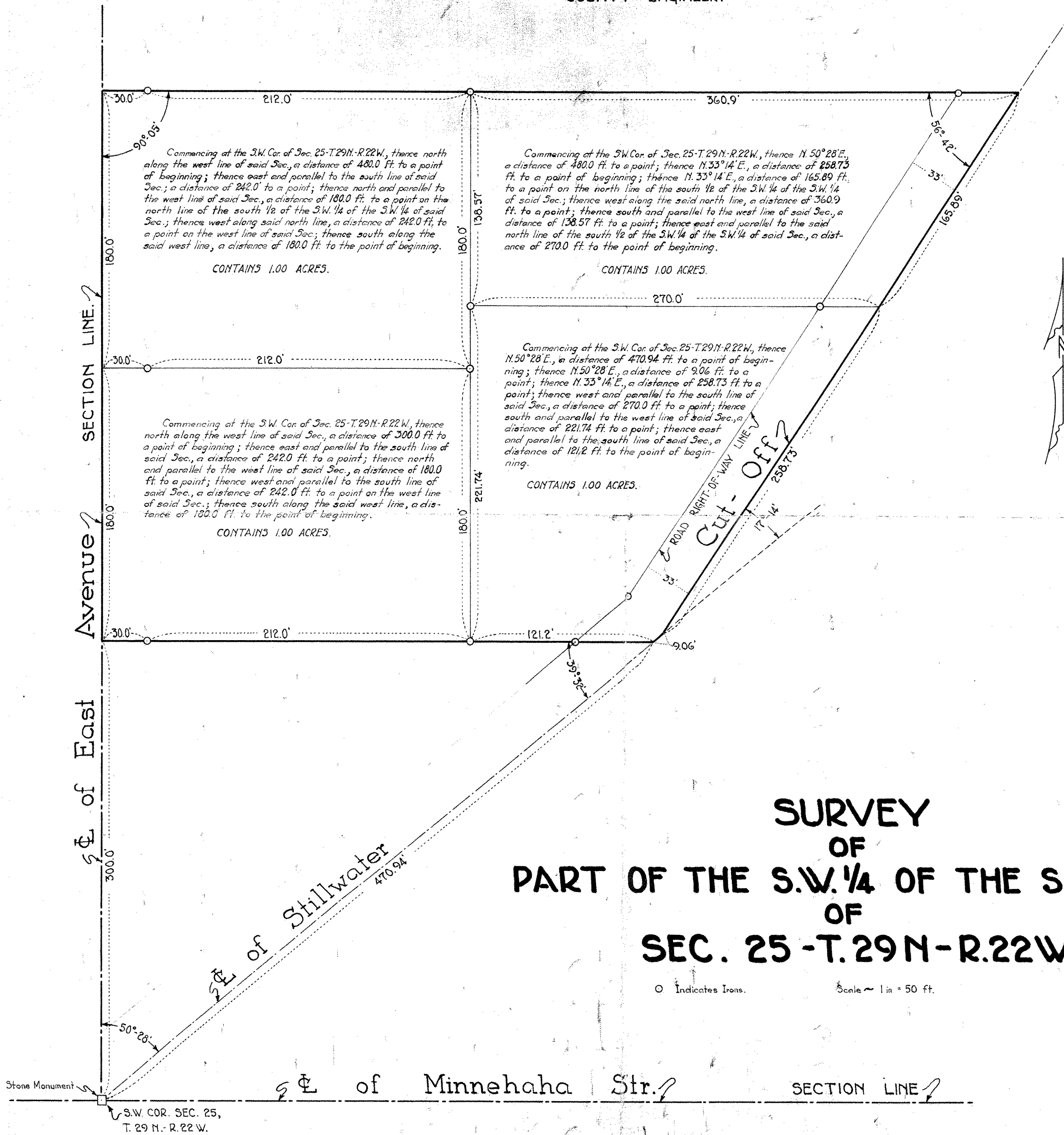


OFFICE OF COUNTY ENGINEER  
 RAMSEY COUNTY  
 MINN.  
 PAUL N. COATES  
 COUNTY ENGINEER.



**SURVEY  
 OF  
 PART OF THE S.W. 1/4 OF THE S.W. 1/4  
 OF  
 SEC. 25 - T.29N - R.22W.**

○ Indicates Irons.

Scale ~ 1 in = 50 ft.