

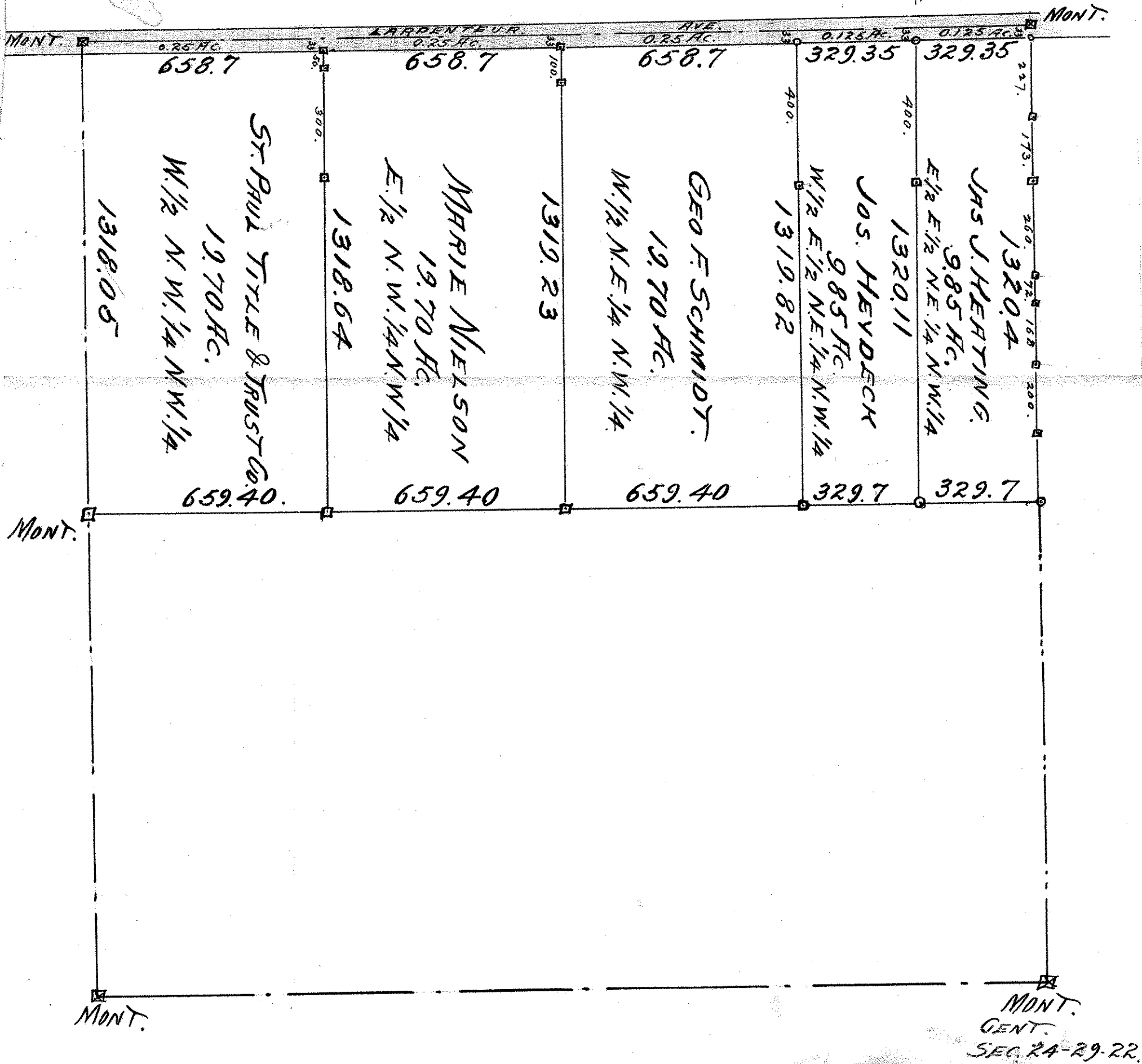
NORTH 1/2 of NORTH WEST 1/4
 SEC. 24, T. 29, R. 22.

C. SCHEUNEMANN SURVEYOR.

MAY 18-1908

SCALE 300 ft. per inch.

INDICATES MONUMENTS
 STAKES
 IRONS



MONT.
 GENT.
 SEC. 24-29-22.