

EAST $\frac{1}{2}$ N.E. $\frac{1}{4}$ N.W. $\frac{1}{4}$,

FILE-23-29-22

SEC. 23 T. 29, R. 22,

N- $\frac{1}{4}$ Cor. Sec. 23

LARPEUR AVE. IRON

1316.8

328.4

IRON

33

330

Mont.

JOHN B. IRVINE SURVEYOR.

408 GLOBE BLDG.

ST. PAUL, MINN.

APRIL 7-1911.

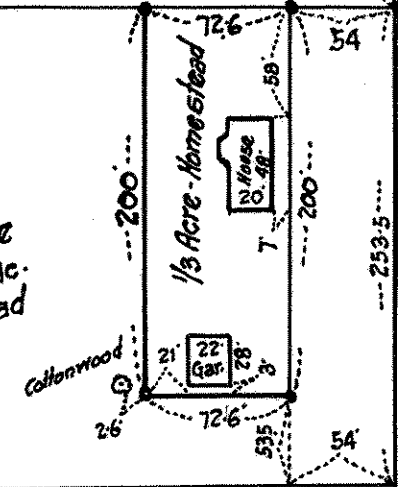
SCALE 100 ft. per inch.

P.R. BANISTER - Consulting Engineer
69-7th AVE - North St. Paul, Minn.

May, 27, 1934



Balance
1-834 Ac.
incl. Road



4 $\frac{91}{100}$ Ac.

652.8

2.0 Ac.

RUTH

LOTS

1318.25

6 east of line

IRON

327.63

19.91 Ac

6 east of line

2.5 Ac.

1318.36

GARDEN

FURNESS

880.

227.2

IRON

330.

Iron.

665.5

5 Ac.

665.5

1 $\frac{8}{3}$ Ac

438.3

3 $\frac{1}{3}$ Ac.

438.36

3 | 143560
14520

Iron

326.9

330.

Mont.

1313.8

1/4 West of cor.

656.9