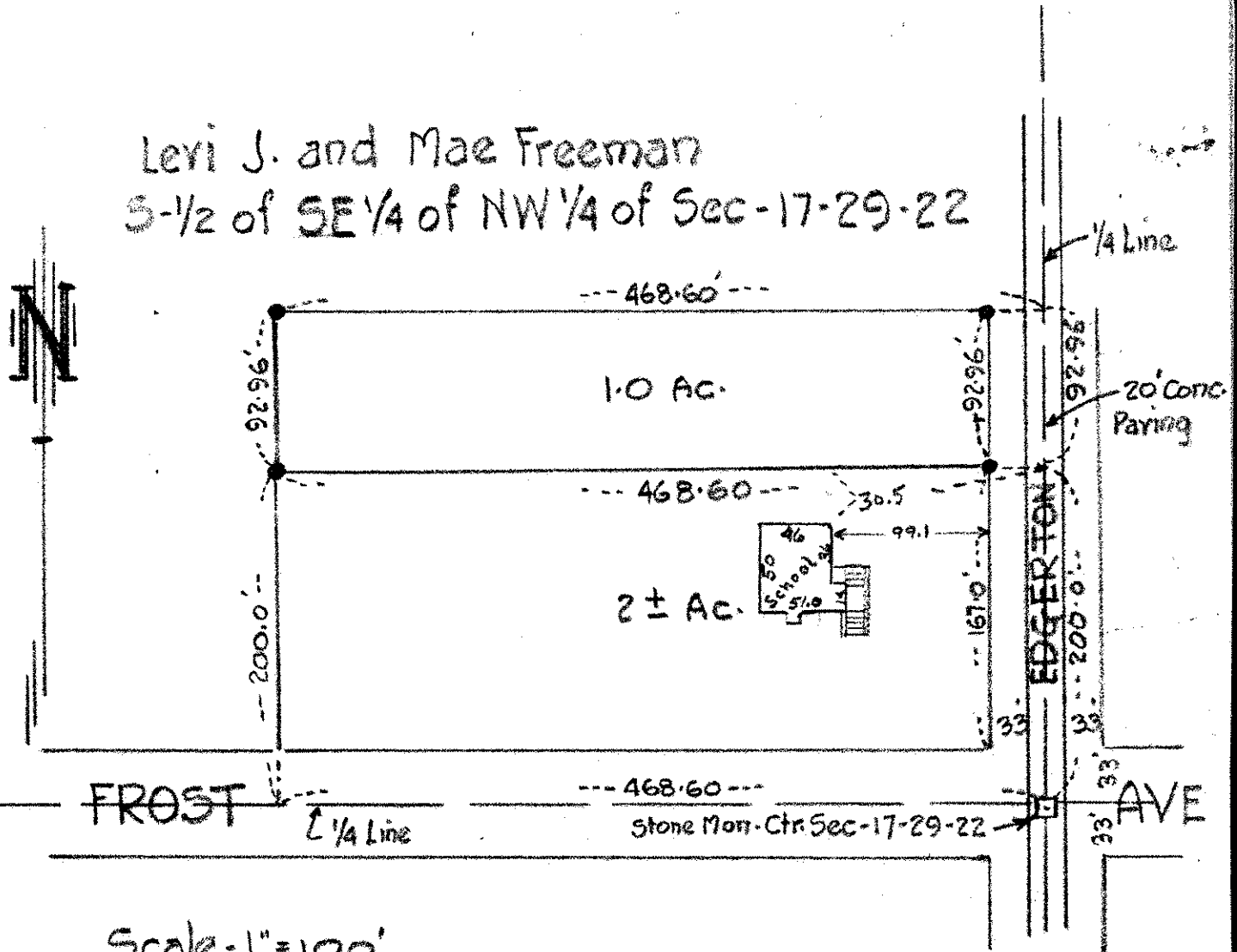


COMMON SCHOOL DIST. NO-1.
 NEW CANADA TWP.
 RAMSEY CO. MINN.

SEC-17-29-22

Leri J. and Mae Freeman
 S-1/2 of SE 1/4 of NW 1/4 of Sec-17-29-22



Scale - 1" = 100'

This is to certify that on this 1st day of March, 1937 the Banister Engineering Company, Registered Professional Engineers, with offices at Prior and University, City of St. Paul, Minnesota, have surveyed the property briefly described as the north 92.96' of the south 292.96' of the east 468.60' of the south 1/2 of the southeast 1/4 of the northwest 1/4 of Section 17, Township 29 North, Range 22 west, Ramsey County, Minnesota according to the U.S. Government survey thereof, that iron monuments have been set at the corners as shown on the annexed plat and that said plat is a true and correct plat of said survey.

BANISTER ENGINEERING CO.

L. J. Lubina