

29 22

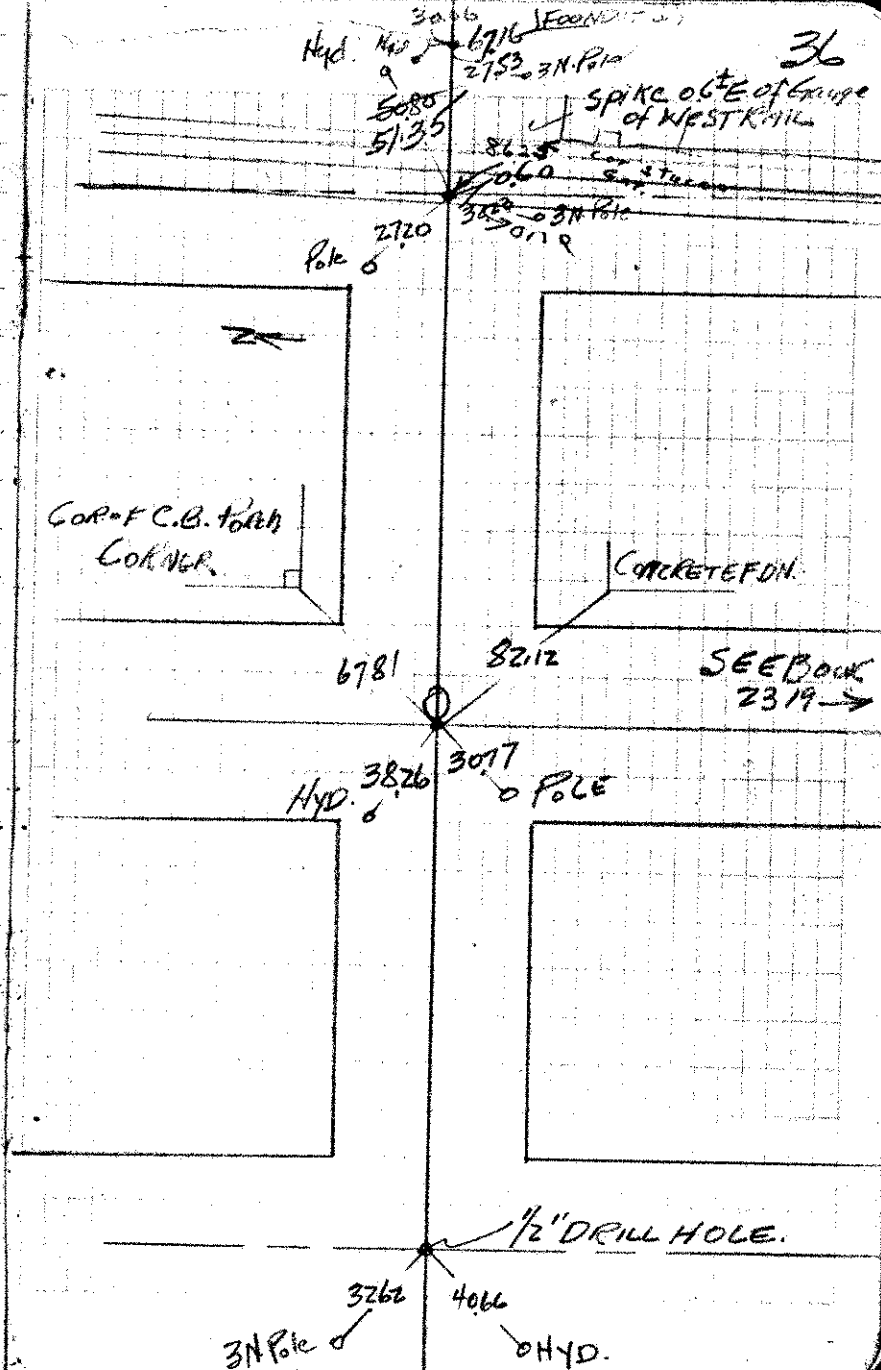
26+16.80 1/4 COR. RUTH AVE.

13+08.40 1/4 LINCOLN HAZEL AVE

(L HARVESTER (CASE) AVE  
WHITE BEAR TO RUTH  
JAN 26-1947 J.S. FORSEBERG)

6+54.20 E VAN DYKE ST.

0+00 E WHITE BEAR AVE.



FB  
382