

# LOCATION OF SIDEWALK & RETAINING WALL ON SOUTH SIDE OF NINTH ST. BETWEEN CEDAR & MINNESOTA STREETS.

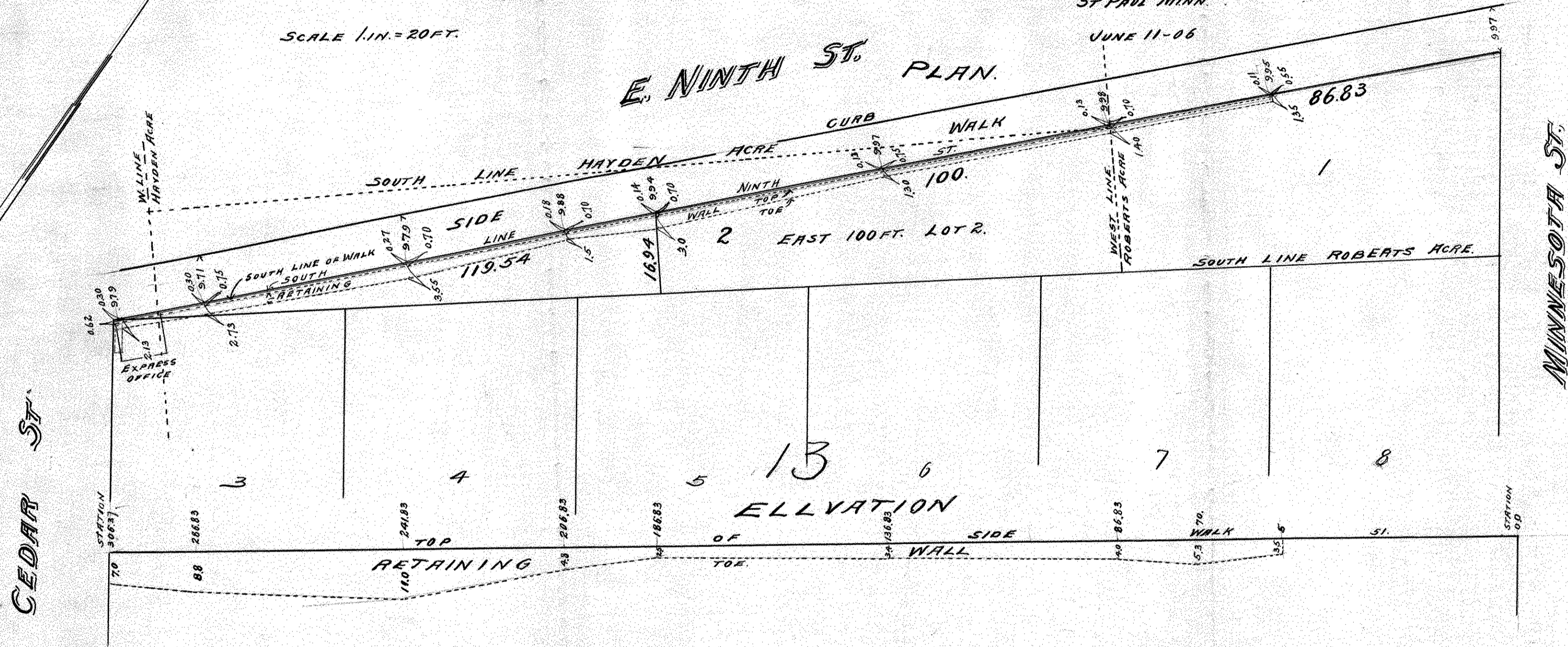
*Per B Robert Randall*

JOHN B. IRVINE, SURVEYOR.  
ROOM 416 GLOBE BLDG.  
ST PAUL MINN.

JUNE 11-06

SCALE 1 IN. = 20 FT.

## E. NINTH ST. PLAN.



CEDAR ST.

MINNESOTA ST.