

LOTS 7, 8, & 9 & THE WEST 9 FT. OF LOTS 4 & 10.
LYING EAST OF LOTS 7, 8, & 9 BLOCK 14.

ROBERT & RANDALL'S ADD.

JOHN B. IRVINE SURVEYOR.
ROOM 406 GLOBE BLDG.
ST PAUL MINN.

SCALE 1 IN. = 20 FT.

JAN 7-07

APRIL 6-06

DEC. 18-06

90.78

92.28

34.39

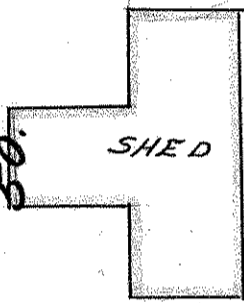
STAKE.

1.5
SPIKE

STAKES

7.3

7.4



7.

LOT 4

32.81

25.0

50.

95.19

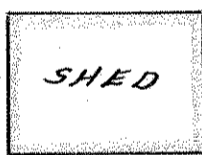
MINNESOTA ST.

7.6

4.6

50.

8.



LOT 10

50.

150.25

125.0

98.10

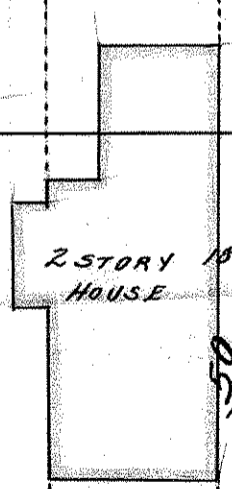
CURB.

75

50.



9.



57"

14"

37"

19 3/4"

19 3/4"

11 3/4"

90° 18' WALK

NAIL IN WALK

101.0

90° 6'

HOLE IN 20" WALK

0.7

HOLE IN WALK

90

24.91

NAIL IN WALK.

1.8

CURB

EIGHTH ST. 0.0

1.5