

**Certificate
of Survey**

CHARLES O. GEORGI COMPANY

2215 West County Road B

Saint Paul 8, Minnesota

MINNESOTA REGISTERED LAND SURVEYOR

I Hereby Certify that this plat shows a survey made by me of the property described on this plat, and that the corners are correctly placed as shown, and that all locations, encroachments, etc., have been correctly shown.

Surveyed For C. HENDRICKS

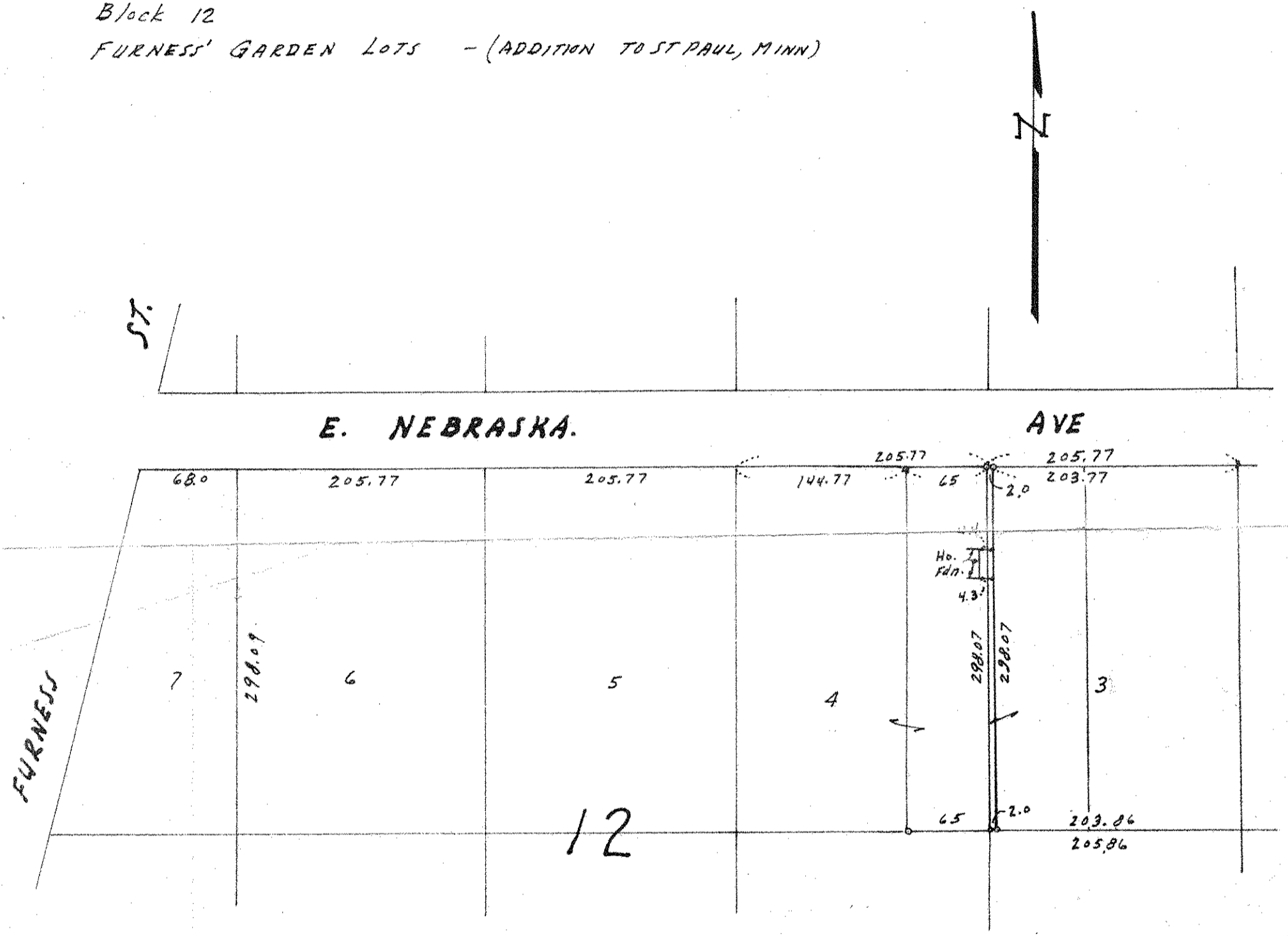
Date JUNE 1958

Scale 1" = 100'

By Charles O. Georgi
REGISTERED LAND SURVEYOR

DESCRIPTION:

The West 2.0 feet of Lot 3
Block 12
FURNESS' GARDEN LOTS - (ADDITION TO ST PAUL, MINN)



• Denotes Iron Monument.